

the society of layerists in multi-media

"...the relationships in art are not necessarily ones of outward form, but are founded on inner sympathy of meaning." — Wassily Kandinsky

Table of Contents:

- | | |
|------------------------------|-----------------------------|
| • SLMM 2008 National Exhibit | • Member News |
| • News | • Books / Videos / Articles |
| • Circle of Prayer | • New Members & Corrections |
| • Regional News | • Officers |
-

SLMM 2008 National Conference

Fort Myers Beach, FL

April 23 — 27, 2008

The Conference will be held at The Pink Shell Beach & Spa Resort www.pinkshell.com. This conference will be a relaxing and unique experience. It includes a day boat trip to a Gulf Island for sketching, photography and beachcombing along with an excursion to Naples to enjoy their world class Art Museum with 15 galleries and the sights and sounds of this beautiful coastal community. Extend your vacation and explore the entire region which includes additional treats like the Ringling Museums in Sarasota along with the Thomas Edison Museum in Ft. Myers. There will be plenty of open time to provide the opportunity for getting better acquainted with new and long standing members.

Calendar:

December 1, 2007 — \$100 deposit per person is due

February 1, 2008 — final payment is due

March 1, 2008 — deadline for hotel reservations

Conference fees: \$350.00 per person. Make the check out to: SLMM.

They include the reception, 6 meals, bus trips, Gulf Boat Cruise with Island excursion, Naples Art Museum visit, gratuities. All fees are non-refundable including the deposit. There will be a \$50 Late Fee for final payment.

Lodging: \$179.00 + taxes, double occupancy. You must book your own rooms by March 1, 2008. This rate will be honored for an additional two days prior and two days post conference. The Pink Shell Resort and Spa, 275 Estero Boulevard, Fort Myers Beach, FL 33931
Call: 1-800-237-5786 (mention SLMM).

SLMM 2008 Art Exhibition

Sidney and Berne Davis Art Center in Fort Myers, FL

April 4th—28th

The show is open to all Full and Life members of SLMM.

The show title and theme are "Illumination". Artist reception will be on Friday, April 25th.

Do not contact the art center. All information will come through:

Richard and Rochelle Newman

\$500 Travel Grant

The winner of the \$500 Travel Grant for 2007 is Marie Cummings!
Congratulations, Marie!

Beverley McInnes, Travel Grant chairman, is heading up this newly named fund to replace the "Discretionary/Scholarship Fund". A \$500.00 Travel Grant will be used specifically to aid a member, *based on need of financial assistance*, to attend a National Conference..

This applicant must follow a few guidelines as follows:

- a) must have been a member of SLMM for two years
- b) must present a written request to their Regional Coordinator by:
January 1st of the year of the conference *or*
4 mos. prior to the conference (whichever deadline is earlier).

Upon receipt of this letter, the Regional Director will then send the request on to Beverley, including a letter that sponsors the applicant stating his/her knowledge of their participation and activity in the Region.

A drawing, from the submitted names, will then be held to determine the successful candidate and he or she will be notified by Beverley. A second drawing will be made in case the successful candidate is unable to attend the conference.

Note: if the candidate is unable to attend, Beverley must be notified four weeks prior to a National Conference. The alternate will then be notified.

In the event that the money is awarded and for some reason the recipient (or alternate) are unable to attend, the full amount (\$500) must be returned to the Treasury.

Beverley urges any of our members who feel that they fall under the above guidelines to submit their request, for the Travel Grant in writing to their Regional Coordinator, or if they feel that they do not know their coordinator well enough, to seek the help of any full member with whom they feel comfortable to assist in the process.

Please contact Beverley McInnes if there are any questions:

October 27th, 9:30am—4pm

Martha Castillo, in Palo Alto, CA, will be leading a
One Day Refresher Clay Monoprint Workshop

A review and up-date on clayprinting for continuing
students. Includes the new NON-TOXIC varnish

.\$125, including materials. Register on line:

<https://www.marthacastillo.net>



Above: Marie Cummings
"All Bottled Up"

November 4th—7th

Marie Cummings is teaching a water media workshop in St. Thomas

The itinerary is exciting including painting time and tours of the island.

This intimate workshop is limited to six adventurers. Check out the web site
www.stthomasworkshop.com and click on itinerary for more information.

New SLMM Mentoring Program

At the conference in Albuquerque, the board decided to start a mentoring program with Kathleen Kuchar heading it up.

What we are hoping to do with this program is to provide some guidance for associates who want to become full members. There are times when the associate may desire some constructive advice — input — feedback as they prepare the application. If the associate wants to consult a mentor, he or she can check the SLMM website for a list of available mentors.

WE ARE ACTIVELY seeking volunteers to be mentors.

Who would be a good mentor? The best ones have experience in critiquing artwork, preparing professional portfolios and the ability to advise in a constructive manner.

If you are interested in being a mentor, please let Kathleen Kuchar know and she will have Carleen put your name on the website.

Kathleen Kuchar

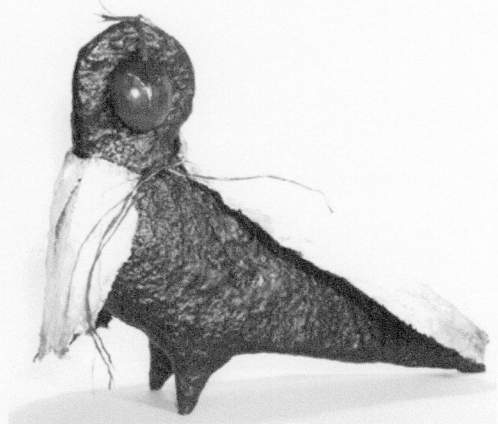
Trip to England in 2008?

Several of our members have expressed an interest in taking another trip to England in July or August of 2008 (the heart of crop circle season). We need to get an idea of how many members would like to sign up for a SLMM tour group that would include a visit to Stonehenge.

Are you willing to help coordinate this trip?

If so, please indicate your interest in your message.

If you are interested in going on a trip to England, please contact Carleen Hearn by **December 15th**:



Ilena Grayson's "Wrapped in a Wing"

OPPORTUNITY

The Visionary Heritage Project

Holly Adams, Artist from Ashland, Oregon, and student of Alex Grey, is still collecting artist stories for her book project.

The Visionary Heritage Project Submission guidelines:

Approx. 300-1200 words. MS word doc.

Linking your experience with art and spirit.

Where Creative endeavor meets the Spiritual.

Images of your work to accompany your story, (if possible) 150 x 300 jpg

Full credit information to be included.

Submit through the form on the corresponding web site:

liveyourmasterpiece.com

or send directly to VisionaryHeritage@msn.com

President's Letter

Hello from Arkansas where we are finally getting weather that whispers FALL! Temperatures are getting cooler and our moods are getting better! That is a good thing! I hope you all are working creatively and enjoying fall in your part of the country. I am energized by lots of things these days including an early retirement from my wonderful school, Henderson State University, where I will be finishing up in December to work full time in my, soon to be constructed, new studio. Life is amazing!

OK , on to things SLMM. I am thrilled with all that is going on in the regions. You are all so active and I am pleased to see many regional shows in celebration of our 25th Anniversary this year. I got a call from a woman in Texas the night after she saw the Texas/Kansas Regional, "It's About Time" which moved this month from Houston to Dallas. She said it was the best thing she had ever seen and she wanted to join us immediately! Our Arkansas Regional, "The Layerist Experience" (with guests from the SouthEast) opens next week, and from what I have seen of the entries, looks to be a really strong show too. We will be posting images on the web from that opening to join those from Texas and NM, so be sure to check them out. Also be sure to send Carleen any photos from your region that you want to share. It is always so much fun to see how our members enjoy each other and their regional activities. These regional shows follow the marvelous Exhibition we had this summer at the Albuquerque Museum in conjunction with our annual conference there. Mary Carroll and Ilena and Jean Nevin, along with many many hard working NM members deserve kudos for making that the most delightful conference ever! It was amazing to see how well that event ran and how Ilena and the museum took care of all of our work! I am sure it is all home safe and sound by now, I know mine is. Thank you all so much.

On to new happenings. I hope you have all contacted Richard and Sheli Newman and are planning to come to our next conference in Ft. Meyers, FLorida April 23rd-27th, 2008. The Pink Shell looks like a fantastic place to relax and visit and beach comb and the venue for our national show, the Sidney and Bernie Davis Art Center looks great. Be sure to get your reservations and also get your work ready for "Illumination" by Jan. 10th. I am sure it will be another strong interesting show of work from all of us. Jean Hutchison and Bevers McInnes and those in Florida will be working to help make it a wonderful event.

I just want to also say that almost daily, even in my hectic life, I think about SLMM and the really wonderful unique organization it is and how much it has given me over the years. I love being a part of this group and of all of you. I am so thankful to Mary for recognizing the unique quality of layered art and for giving us such a gift in the connections we make and the love we share as SLMMers. I feel very blessed to count each of you as fellow artists and friends. I hope we all can gather together this spring and once again celebrate the joys of SLMM! I want to wish you all the best of holidays coming up and let you know Tommy and I send best wishes.

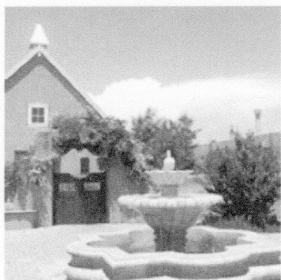
Wishing you love and peace.

Nancy

Nancy Dunaway, President of SLMM

Ann Hartley
"Letters"





25th ANNIVERSARY SLMM CONFERENCE JULY 11-15, 2007 ALBUQUERQUE, NM

Commanding the view on Albuquerque's eastern edge are the Sandia Mountains (Sandia....Spanish word for watermelon, because they turn pink at sundown) while north and south through the lush Rio Grande valley, this city, founded in 1706, is distinct with natural contrasts, wide open spaces, shining vistas and magical natural light. Old Town, where our 25th

Anniversary SLMM Celebration took place at Hotel Albuquerque, is the site of the city's original settlement and retains to this day its architectural charm and cultural spirit of the Spanish founders.

I arrived a couple of days before the Meeting began so I could absorb as much of this charming location as possible. As I sat outside the hotel in the early cool morning air, I sketched adobe style buildings, the leather barrel chairs, lavender, rosemary, sages and grasses while hot air balloons sailed colorfully overhead and gracefully in the distance.

After registration on July 11th and proudly wearing nametags collaged by our SLMM Albuquerque members, we gathered for cocktails while greeting old friends and making new acquaintances. The Placitas Mountain Band with Jerry Grayson, entertained us and we all loved their fabulous performance. After the Buffet, complete with Southwestern style food, Ilena Grayson surprised us with a memento commemorating SLMM's 25th Anniversary. We each received a small glass pyramid chosen from an arrangement on a lightbox of 150 + pyramids each reflecting the light upwards and outwards.

Thursday, July 12th, was the workshop day while in addition, a morning or afternoon excursion was chosen. Tours of Albuquerque galleries or a visit to the National Hispanic Cultural center filled in the remainder of the day. The popular workshops were wonderful! I chose Encaustic with Marilyn Christenson and Allan Young; while Colored Pencils with Ann Jeffries; Altered Books with Nancy Dunaway and Marlene Lenker; Assemblage with Ilena Grayson and Nancy Young were also offered. To all our instructors.... thank you on behalf of us all.



Above: Altered Books

Right: Assemblage



Left: Jean Hutchison in Colored Pencil

Below: Encaustic



After this busy day, some enjoyed swimming in the outdoor hotel pool and then we gathered again for cocktails and a dinner banquet after which Peter Pesic the keynote speaker, author of 'Sky In A Bottle', talked about Science and Art. He explored this fascinating subject and noted that, "Art can find its own reality while science gives its own account".



Friday, July 13th, found us all from 9:00-5:00pm, "Exploring Multiple Dimensions" in the day long Symposium. Between the sessions, Terry Gay Puckett led us in Tai Chi breaks as we stretched our limbs.

The first speaker, Nancy Azara, sculptor and author of 'Spirit Taking Form', (www.nancyazara.com) spoke about the magic of the creative process and "in the process of making art, we are engaged in a courageous act". Nancy Azara's

power point presentation illustrated her work and her use of hands, shadows and touching the spirit of light. Her use of palladium leaf instilled almost gold into her pieces while her cast bronze and gilded pieces were beautiful as she spoke of "the doorway to that personal place in my soul.... making art".

Drs Larry and Barbara Dossey were our next speakers. Dr Larry Dossey covered the historical layers of medicine and healing and he spent some time explaining spirituality and its effect on our bodies. ('Healing Words', by Dr Larry Dossey) Barbara Dossey then spoke about her own work researching Florence Nightingale and her new book about to be published, 'Florence Nightingale: Mystic Visionary Healer'. She described Florence Nightingale's vision in the Victorian age and the impact it still has today. Dr Dossey then told us about the 'Nightingale Initiative for Global Health' to be achieved by 2020. She urged us to sign a petition she had made available and to also check the website: www.nightingaledclaration.net

Throughout the Symposium day and continually throughout the week, the Hospitality Room was open to SLMMers who wanted to browse through the books for sale, view scrapbooks and see videos of some of our members' work. Lynda Paladin looked after this area and I was pleased to purchase, Lydia Ruyle's 'Fifty Years Of History In Art', Pauline Eaton's, 'Crawling To The Light' and David Paladin's 'Altered States' and 'Painting The Dream'. I ordered Mary Carroll Nelson's new book 'Crop Circles, An Art Of Our Time' and await its arrival.

Upon returning for the afternoon session, we turned our focus to Barbara Hand Clow and Gerry Clow, authors of 'The Mayan Code' and 'Alchemy Of Nine Dimensions', to name just a few of their books. (www.handclow2012.com) I had read about the Clows in Mary Carroll Nelson's book, 'Artists Of The Spirit; New Prophets In Art And Mysticism' and was anxious to listen to their presentation. Their lecture and demonstration was fascinating as they persued their passion and imparted it to our group.



Above: Dinner at Nina Adkin's home

submissions for juried SLMM exhibitions and some of the guidelines that must be followed such as: the necessity of high resolution, correct image (tone, shadow etc), checking technical requirements, requested 300dpi X 6 inches jpeg, make sure to put file name onto the disc, have images in 100% order, no fancy programs...just jpeg and finally crop images so as not to show frame or background (in other words, "tight to the image"). I particularly liked Jerry's suggestion to take the Call for Entry form to the photographer you may be choosing to photograph your work and let him/her see the necessary requirements.

Following the General Meeting, I visited Albuquerque's well known and creative artist, Meinrad Craighead in her Studio. Having read about this amazing artist in Mary Carroll Nelson's book, 'Artists Of The Spirit', I was quite excited to meet her and see from where her vision and creativity emanated. It was inspiring and so very peaceful sitting in the shade of her home and studio on that hot and sunny afternoon. Nancy Dunaway described her visit with Meinrad noting "the generosity of her time and space and the wonderful openness with which Meinrad received us all". I came home with her 'Women Of The Old Testament' cards and some of her prints, 'Sacred Marriage...Images from the Song of Songs'. Do look at her website www.meinradcraighead.com and also the Meinrad Craighead Documentary project: www.meinradproject.org fall newsletter 2007, vol. 75, pg 6

A panel involving all the speakers followed and completed this wonderful day filled with "mental feeding". After numerous questions and answers from the members and the panelists, we found ourselves readying for the evening activity. Nina Adkins had generously offered her Albuquerque home for dinner and we enjoyed being outside in the soft warm evening air as we ate around tables in her garden filled with native New Mexican plants, thriving in this arid climate.

The General Meeting on Saturday, July 14th was chaired by Nancy Dunaway and it was filled with information for us all to take home from the meeting. The next SLMM Meeting will be held April 23—27, 2008 in Fort Meyers, Florida along with an accompanying National exhibition, "Illumination". Check the SLMM website for all the details!

Jerry Grayson then spoke to the group about digital

Below: Hanne-Lore Nepote & Meinrad Craighead



The Opening of 'Exploring Multiple Dimensions' at the Albuquerque Museum of Art and History took place July 14th at six o'clock. This beautiful building in Old Town will be the home of the juried exhibition until Oct 7th and we all were thrilled to experience the tremendous talent and creativity of our members as we viewed this well hung exhibition. The exhibition reflected the incredible variety that expresses so well the SLMM philosophy of inclusiveness and honoring of each individual vision.

That evening, a catered, sit down dinner in the Museum with a single iris centerpiece on each table, was magical and we were deeply touched by the dance performance of one of our members, Mimi Chen Ting. Through gentle movements, she beautifully presented her interpretations set to music. The next day when I returned to see the exhibition again, I talked with Mimi Chen Ting and she told me she had danced to the soundtracks from *House Of The Flying Daggers*, *Ladies In Lavender*, Bach's *Cello Suite* and the *Faure Requiem* among other selections. Thank you Mimi for a lasting memory.



On Sunday, after the Closing Circle, we all said good bye and with hearts filled with nostalgia and memories, we returned to our homes and studios. We had been spiritually fed and uplifted by this 25th Anniversary Meeting of our organization.

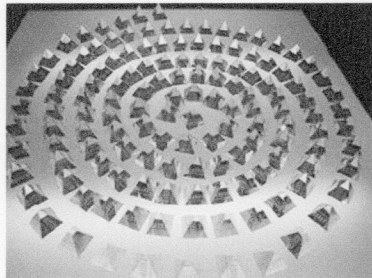
The Pinon trees of New Mexico provide some of the stark and powerful images of this state. These trees symbolize 3 different cultures, survive in the desert, have needle sharp green branches and their roots dig deep into the earth. As artists, our roots dig deeply into our SLMM organizationhow fortunate we are !

Thank you is never enough for all the effort put into this 25th Anniversary Celebration in Albuquerque, by so many people. Mary Carroll Nelson's vision became a reality!

Beverley McInnes Chester, Nova Scotia

"These mementos commemorate our 25th Anniversary. the blue light represents the energy field that surrounds us all. Each pyramid absorbs the light, transforms the light and reflects itself back to the light source, just as artists do. These pyramids are together briefly, as we are, and then each member will take one away to remind you of what we have shared."

Ilena Grayson



Right: Ilena Grayson with her SLMM pyramid installation at the 2007 National Conference



A Circle of Prayer

In Memoriam:

Please keep in your prayers the family members of:

Ann Bunn — who served as one of the Regional Coordinators for the West Region, died after a brief bout of cancer on July 17, 2007.

A Circle of Prayer

Please keep in your prayers:

Valaida D'Alessio has been diagnosed with Charcot-Marie-Tooth disease, an inherited neurological disorder, and is currently undergoing physical therapy.

Marilyn Christenson and family. Her mother died in Austin, TX in June.

Barbara Harden, Nancy Dunaway's friend, who has learned recently that she has breast cancer that has metastasized to her spine. She is undergoing chemo and her doctors have told her it is incurable but treatable and manageable. "Would you all please pray for her in managing this disease and living with it. Thank you so much! Nancy"

Jane Heller found out that she has breast cancer this year.

Ruth Meredith, faces surgery in September which will delay her plans to teach at UNM.
— August

Laura Pope, had surgery and faces surgery again at the end of October. She asks for our prayers that it will be safe and successful.

Annrae Roberts has been diagnosed with breast cancer again after 20 years.

Regional News

SLMM Midwest Regional News

September 17th — November 9th
SLMM Midwest Regional Artists are having their "Meaning, Myth and Mystery" Exhibition at the LeFevre Hall Gallery, Ohio State University, Newark Campus.

Images on the invitation, clockwise from top right:
"The Crow and Muse" Sharon Stolzenberger,
"Night Life" Karen Benedetti,
"Alighting Spirit" Deanna Funk,
"Flight 880" Gayle Denington-Anderson,
"Lyrical Geometry" Nancy Richards-Davis.



SLMM New Mexico Regional News

July 15th— October 7th
SLMM New Mexico Regional Artists had their "Exploring Multiple Dimensions—The New Mexico Perspective" at The Albuquerque Museum

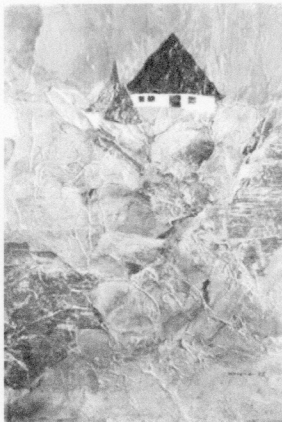
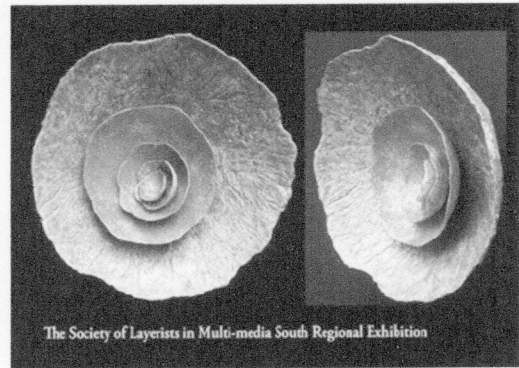
September 4th— 19th
SLMM Local Exhibition by the Las Cruces, NM Artists was held at the Corbett Center Art Gallery, New Mexico State University

SLMM South Regional News

November 6th — 30th

The South Regional Artists will have their "The Layerists Experience" Exhibition at the Russell Fine Arts Gallery, Henderson State University. The reception will be Tuesday, November 6th at 2pm.

Right: South Regional Invitation artwork by Carleen Hearn



SLMM Southwest Regional News

October 31st — November 17th

The Southwest Regional Artists will have their "Creative Expression" Exhibition at the Manheim Gallery. The reception will be November 2nd at 5pm — 7pm.

Left: artwork by Wanita Swank in the "Creative Expression" Exhibition

SLMM TX, OK & KS Regional News

September 4th—28th

SLMM TX, OK & KS Regional Artists will have their "It's About Time" Exhibition at the The Jung Center in Houston, TX.

October 8th — November 2nd

SLMM TX, OK & KS Regional Artists will have their "It's About Time" Exhibition at the Artists Showplace Gallery in Dallas, TX



SLMM West Regional News

June 2008

SLMM West Regional Artists There will be a Western Region Show in Trinidad, Colorado at the beautiful, new First Street Gallery in the Victorian A.R. Mitchell Museum of Western Art. The Show will be in June, 2008, timed to coincide with the annual Santa Fe Trail Days celebration, which brings in people from all over Southern Colorado and Northern New Mexico.

Trinidad is emerging as the "Little Taos of Southern Colorado" with the renewed interest in refurbishing its historic Victorian buildings and the development of a Jack Nicklaus Golf Course Community, Cougar Canyon, on the outskirts of town.

The show will be curated by SLMM member Cynthia Berresse Ploski in cooperation with the Trinidad Area Arts Council. For information, contact Cynthia.

Members News

Amitai, Renee — in an Art Competition At Point Vicente Interpretive Center on March 30th. in the Salon International d'Art Contemporain International Exhibition in Cote d'Azur, France — May 4—19; was introduced as a new artists at the DSG Gallery in Albuquerque, NM — July 15th; participated in "Open Art" an International Exhibition of 100 artists from 37 countries in Rueil-Malmaison & Villepinte, France.

Beam, Mary Todd — She is one of 24 artists nationally who have been chosen to represent the United States in the First China International Invitational Exhibit in Nanjing, China. The exhibition is sponsored by the Jiangsu Watercolor Society International exhibition. This is the first Invitational Exhibition of Contemporary International Watermedia Masters with 90 artists being invited from around the world. It will hang in Nanjing, China from November 9-22. She chose her painting, "Where Crickets Dwell" as her selection. It is a closeup rendering of Little Cricket Creek which flows by her summer studio in Cosby, TN. The 24 USA artists and 2 from Canada were chosen by artist Cheng-Khee Chee AWS,DF,NWS. T.W.S.A. She is now writing a new book, "The Creative Edge" which will be published by F and W publishers in Cincinnati. Her previous book, "Celebrate Your Creative Self" has sold over 53,000 copies worldwide. It is available at Barnes and Noble and Amazon.com. She will be conducting a workshop in Highlands, N.C. this fall and also one at Arrowmont, in Gatlinburg next July among several others.

Brody, Carol Z. — earned First Place at the Salmagundi Club Members' Exhibition — Jan 5—Feb 7. She was also awarded Second Place in the National Assoc. of Women Artists — FL show, "Pot Pourri", held at the Cornell Museum, Delray Beach, FL— May 22—June 2. In addition, Carol received the Jack Richeson Award at the Missouri Watercolor Society's Members' Invitational Exhibition, in Columbia, MO — Sept 9—Oct 31.

Carmel, Bill — "Rhythm & Hues" solo show at a gallery of fine art located in San Ramon Dental Center in San Ramon, CA — Aug 10— Nov 9.



Castillo, Martha — was in an 8 person show at Gallery House in Palo Alto, CA — May 6—26; she gave a demonstration at the Gallery House May 5th & 6th; had an Open Studio event at her Clayprint Studio on May 12 & 13; hosted a clay monotype workshop in her studio — July 17—19; gave a clayprint demo on Saturday, July 21. Gave a Clay Monoprint Workshop on September 14—16, and a one day introductory workshop on September 29; gave a one day refresher workshop on clay monoprints — Oct 27; in the 1st Annual Juried Exhibition at Gallery 2611 in Redwood City, CA — Sept; in "The Power of One" monoprint exhibition with 3 other artists at the Gallery House in Palo Alto, CA — Oct 19—Nov 10.

Chaney, Deb — She was the featured artist of the month in the October 2007 new sletter interview with Jill Badonsky, M. Ed. founder of Kaizen Muse Creativity Coaching. Full interview version is available on Deb's blog site; she participated in Lana Grow's awesome Experimental and Energizing watermedia and collage workshop at the Peninsula Art School in Door County Wisconsin. Lana is also a member of SLMM — July; Deb started writing bi-weekly articles online about creating contemporary abstract paintings using collage, acrylics, and mixed media as well as exploring life as an artist; studio habits, and creative inspiration. See all articles since July at <http://debchaney.blogspot.com>.

Chapline, Claudia — she will read her poetry in the Marin Poetry Center's Summer Reading at Falkirk Cultural Center, San Rafael, at 7pm — May 1st. "Strong Waves, Contemporary Women's Art" The Claudia Chapline Gallery in Stinson Beach will play host to Women's Caucus artists from Northern California and Florida in an exciting show that celebrates 35 years of Feminism. "Strong Waves" has joined forces with the Feminist Art Project at Rutgers University, in a national initiative to bring public attention to the significant and continuing impact of women and their art on all aspects of contemporary art practice.

<http://www.feministartproject.rutg> — May 5—27; in the "ReArt Exhibition" Group Exhibit at the Market Street Gallery in San Francisco, CA — June; gave a reading of her poetry on Jennifer Stone's program, *Stone's Throw*, KPFA, 94.1 FM — July 24; in a two person art humorist exhibition, displaying her "Natural Food Plates" collage painting series at the Claudia Chapline Gallery in Stinson Beach, CA — Oct 12—Nov 30

Cox, Pat — In the "Assemblages" Exhibition at the Lucy Florence Cultural Center in Los Angeles — October.

Croucher, Kit — led a Book as Paper Sculpture Workshop at the Napa Valley Museum — Sept. 29

Cummings, Marie — Marie won a merchandise award for her painting "Another Layer" at the 10th annual ISAP, International Society of Acrylic Painters in San Luis Obispo, CA; Her work "All Bottled Up" won the Curator's Choice award at www.photosandart.com; The Guide Magazine, from the Catskill Mountain Region selected her work to feature in their January issue. The National Association of Women Artists accepted her work into their show at the Blue Hill Cultural Center, Pearl River, NY. The Cooperstown Art Association accepted her work "Aura" into their National Show where she received an award. Her work "Into The Mystic" won an award at the NAWA annual members show. Her latest entry into the International Society of Experimental Painters has been accepted for their 16th annual exhibition in Santa Cruz, CA. Recently she created a series of paintings for a display at the Ommegang Brewery in Cooperstown, NY. They gave me beer labels to use in the paintings. The owner of the brewery bought the painting. — October



"Vortex" by Agnes Eyster
Galvanized steel & copper

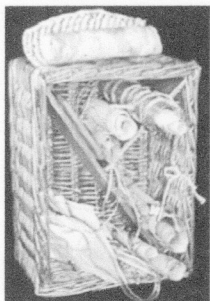
Dixon, John Andrew — his "KOSMOS: Discovery and Disclosure" Solo Exhibition was held at the Community Arts Center in Danville, KY — May

Downes, Eileen — has artwork in the Opalka Gallery, The Sage Colleges in Albany, NY — Sept—Oct 20th; featured artist in the 20th Street Art Gallery in Sacramento, CA — Oct 10—Nov 2; in the Longview Museum of Fine Art in Longview, TX — Sept 15—Oct 25; in "Personal Landscapes" the NAWA Annual National Invitational at the Monroe Center for the Arts in Hoboken, NJ — Sept 9—30; in the Pence Gallery Annual Art Auction in Davis, CA — Sept 1—15; she now has representation by Our House Gallery in El Dorado Hills, CA, as well as a commissioned site-specific work for Kaiser Hospitals, Modesto CA

Drew, Elaine — her artwork was included in the "Spirit of the Dream" Juried Exhibition, International Association for the Study of Dreams at University Library Art Gallery, Sonoma State University in Rohnert Park, CA — June 15—July 27; in the "Art: Believe/Achieve" group exhibition of the Nat'l League of American Pen Women at the John O'Lague Galleria, Hayward City Hall in Hayward, CA — Aug 1—Sept 24;

Eaton, Renee — is participating in San Francisco Open Studios Weekend 4—SOMA Artists Studios — Oct 27 & 28; will be showing five paintings from her new series “Seeking Balance” in the “Feminist Art—The New Wave” at The Salmagundi Art Club in New York, NY in a group show from Oct 28—Nov 2; in the Art Angels Festival at St. Stephen’s Church in Belvedere, CA — Nov 9 & 11

Ebert, Leslie — “My news is that after attending the conference I was so inspired & envious of those I meet going back to school that I have enrolled in a low residency Masters program in Consciousness and Creativity, threw the Edger Casey Institute and Atlantic University. Ok, Its only been a month but I am loving it. Thank you SLMM you are all muses!”



Pauline Eaton
“Ancient Messages”

Etemad, Jaleh — was part of the committee of organizers of Tiburon Art Festival in 2007

Fraser, Catherine — She has had artwork appear in these publications: 2 art images: “The Nurse”, “The Rainbow and Peacock Feather” Parkhurst Exchange (Medical Journal from Montreal) May 2007; AJN (American Journal of Nursing-Cover art (The Herb Store) and inside article (The Market) August 2007.

Gentz, Renee Brainard — She was included in the New Mexico Women in the Arts show in Taos, a biennial show done under the umbrella of the National Women in the Arts organization of Washington DC. She received a purchase award. Her piece, “Light & Lively will now be part of the University of New Mexico’s Harwood Museum permanent collection. The piece is made of layers of hand dyed silk organza squares.

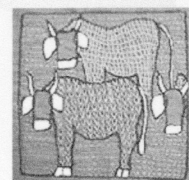
Hack, Elizabeth — in the “Art: Believe/Achieve” group exhibition of the Nat’l League of American Pen Women at the John O’Lague Galleria, Hayward City Hall in Hayward, CA — Aug 1—Sept 24;

Hart, Pam — taught a CREATIVITY InsideOut Workshop at the Rome Art and Community Center in Rome, NY — June 11—14

Hartley, Ann — National Collage Society 23rd Annual, Cornell Museum of Art & American Culture, Delray Beach, FL — Sept 13—Oct 28; 2007 International Society of Experimental Artists (ISEA) Annual Exhibit, Santa Cruz, CA — Aug 11—Sept 9; Mixed Media Artists of Houston, “Celebration of the Spirit”, The Brazosport Art League, Clute, TX — Sept 25—Oct 28; Lawndale Art Center, “Dia de los Muertos”, Day of the Dead Exhibit, in Houston TX — Oct 22—Nov 7

Hearder, Valerie — Valerie, a South African herself, has spent a good deal of time promoting the African women. She has updated her web page with new embroidered textiles from South Africa. There are some lovely new works and some of the very special mother & child icons from the Keiskamma Art Project, some of which are framed. Please go to www.africanthreads.ca.

“My project to give 100 percent profits to the Grandmother Campaign has now wrapped up and I was able to donate \$1,600. African Threads aims to operate on a self sustaining basis, in the spirit of Fair Trade principles. My chief goal is to market the textiles and create economic benefit for the women in South Africa and I’ll continuing to donate 15% of the profits to the Grandmother Campaign — thus benefiting the artists in South Africa twice. More details on the web page. I also have fabulous “Grandmothers of Africa” black t-shirts silk screened with an embroidery design (artist fees are paid to the woman who made the design). Take care and please help spread the word about African Threads.
Kind regards, *Valerie Hearder*

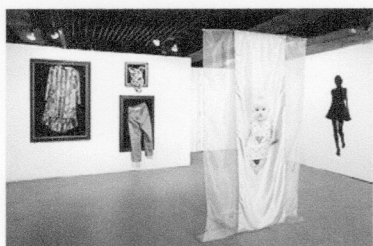


Hughes, Mary — is a new SLMM Board Member — July. She is the Project Coordinator.

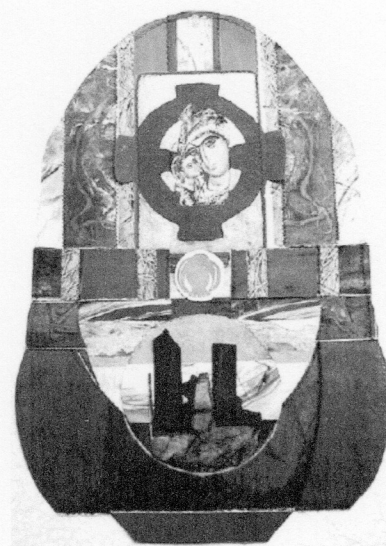
Insero, Elaine — her mixed media artwork “Memorial 9 11” was on exhibit with the Monotype Guild of New England Juried Exhibit at the Mill Brook Gallery and Sculpture Garden in Concord NH — June 22—Sept 8th. Her work was also included in the exhibit “Ten Printmakers” and with The Abstract Artists Group of New England exhibit “Its Abstract!” at the Newburyport Art Association.

Johnston, Ann — her “Line vs Shape” Solo Exhibition & Lecture at the Washington State University, Vancouver Campus Administration Building — Oct 8th—Nov 29. The lecture was given on Wednesday, October 17th.

Kaye, Ritchie — “The Museum of Clothes Too Small & Too Large” — which showcases Ritchie’s new work, is about women and their image of self as it relates to body image. As a part of this exhibit women are invited to bring their clothes, too small and too large, and to leave them at the gallery exhibition space. All clothes will be donated to local women’s shelters at the close of the exhibit. The intention is that by giving up the clothes that they are holding on to, waiting for that “perfect” body, women can take action to release themselves from the cultural trance imposed upon them by the media.



“The Museum of Clothes Too Small and Too Large”



“Memorial 9 11” by Elaine Insero

Her “WW One” is a tribute to the power of women and a commitment to the philosophy that strong, centered women create a strong, centered world. The WW One exhibition features three silk banners with images representing Female Archetypes and their wombs of wisdom. The images are of Ritchie, her 9 month pregnant daughter, and 3 month old grandchild.

The banners have been “veiled” since the recent censorship encountered when they were exhibited at Truman Medical Center’s Center for Healing Arts Gallery in June (Kansas City Star, June 30, 2007). See *Member News 2006* in the members pages of the SLMM website for an image of the unveiled banners.

In this exhibit the banners take on new form. Each female depicted is now wearing a veil, like the burqua, implying that values other than their own have been imposed upon them by society. The message now is that their bodies are not “ok” as they are, but rather, need to be somehow changed, hidden, or veiled, to please others.

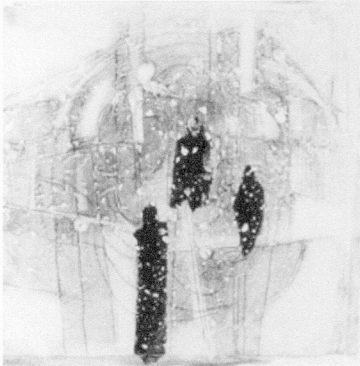
Keebler, Catherine — She is on the Venue Committee representing the SLMM Board.

Kroll, Lynne — She won the traveling award in American Watercolor Soc. 140th Ann. Int’l Exhibition, Salmagundi Club, NY — Mar 27—Apr 22; won the Holbein Merchandise Award at the Western Colorado Watercolor Soc. 15th Ann. Nat’l Exhibit, Western Colo. Center for the Arts, Grand Junction, CO — Feb 7th—Apr 7th; Southern Watercolor Soc. 30th Ann. Exhibit, Colquitt County Arts Center, Moultrie, GA — Mar 16—Apr 13; won FIRST PLACE FOR WATERMEDIA at the Catherine Lorillard Wolfe Art Club Members Exhibit, Broome Street Gallery, NY — Mar 27—Apr 15; Missouri Watercolor Soc. 7th Ann Exhibit, Anson Cuts Gallery, Fulton, MI — Apr 1—May 19; Watercolor Soc. Of Alabama, Anniston Museum of Natural History, AL — Apr 1—May; Louisiana Watercolor Soc. 37th Ann Int’l Exhibit, Covington, LA — May 12—June 1

LaPierre, Tomi — has had three pieces accepted at the 40th Arts International at the El Paso Downtown Public Library in El Paso, TX. It was co-sponsored this year by the El Paso Art Association and the Cancer Treatment Institute. — Oct 5—26

Leites, Ara — Ara Leites is a finalist in The Artist's Magazine Experimental Division (Dec issue); a finalist in "Blossom—The Art of Flowers" Susan K. Black Foundation at the Neville Public Museum in Green Bay, WI; received Award of Achievement in the Missouri Watercolor Society National Show; received Dr. P.H. Martin Hydros F.A. Watercolors in GWS National Show; received Savoir Faire Set of Acrylic Paints in ISAP International Show; received the Segaul Family Award in Adirondacks Nat. Exh. of American Watercolors; Noted for Recognition award in Taos National Watercolor XI in Taos, NM; received the Savoir Faire Award in CWA National in San Francisco, CA. She had work accepted in SCAL "Revisiting the Romance of California Landscape" in Santa Cruz, CA; Society of Layerists in Multi-Media National Exh. in Albuquerque, NM; in ISEA National Show in Santa Cruz, CA; in Rocky Mountain National Watermedia Exh in Golden, CO; in Philadelphia Watercolor Club Society National in Lancaster, PA; in NWS National in San Pedro, CA; and in (NSPAC) National Society of Painters in Acrylic and Casein in NYC. In 2007, two books have included my work: STROKES OF GENIUS, the best of drawing, a Northlight book; Kennedy publications included watercolors in its BEST OF PAINTING, WATERCOLOR series.

Lovin, CaroleAnn — a Clearwater, FL artist and weaver, will be participating in the Global Art Project for Peace exchange. "Peace Arising", an inlay-woven wall hanging by Ms. Lovin, will be on exhibit at the Dunedin Fine Arts Center in Dunedin, FL during November and December and then will be sent off for the exchange in April 2008.



Marculewicz, Nancy — Nancy's monotype, "Wandering Souls", was the recipient of the Harry Ballinger Award for Excellence in Graphics at the recent exhibition, "The Past and the Present", at the North Shore Arts Association of Gloucester, Massachusetts. This exhibition, in celebration of the 85th anniversary of the Arts Association, featured selected works by current artist members together with those by distinguished artist members, of the past, on loan from various private collections.

Left: "Wandering Souls"

McInnes, Beverley — is a new SLMM Board Member — July. She is the new Travel Grant coordinator.

Mihm, Nina — has received notice that her collage "Since the Beginning of Time" has been selected for the month of May in the 2008 Multifaith Calendar produced by the Multifaith Action Society of B.C.; will have a two person exhibition: her series entitled "Women of the World" with Delda Skinner's paintings "Women of the Word" at North Hills Methodist church, Austin Texas opening the first week of February. A member of the Nominating Committee representing the SLMM Board.

Mitchell, Karen Rand — has new work in the 3-person exhibit "Forces of Nature: Exploring Spiritual Landscapes" at the Hygienic Arts Galleries Inc. in New London, CT— Sept 8—Oct 6

Morgan, Veronica — is the new Regional Coordinator for the Northeast Region — July. "Veronica Morgan volunteered to take over the job of Regional Coordinator for the Northeast on July 14. She is very organized and thorough and will do a super job. Thank you, Veronica, and bless you...Nancy Marculewicz"

Newman, Richard — he has two works in the 51st National Fall Exhibition at the Southern Vermont Arts Center in Manchester, VT — Sept 29—Oct 28th. He is the Chairman of the new Venue Committee.. (The other committee members are: Catherine Keebler, Rochelle Newman, Maryanne Scatamacchia, and Jack Richards.)

Nikkal, Nancy Egol — in the New member exhibition at the The Silvermine Guild Arts Center in New Canaan, CT — Jan; she was one of over 200 artists from 14 countries, who participated this year in the 9th International Collage Exchange (ICE) “Brick & Mortar and a Cyber Show” — April; started her “The Color Memory Series: Impressions of Sedona, AZ”

O'Brien, Kathleen — One of 124 Kentucky artists to have her work screened by the Kentucky Arts Council for the Al Smith Individual Artist Fellowship awards at the at the Lexington Public Library — beginning May 29th; participated in the Francisco's Farm Arts Festival at Midway College — June 10—17

Pendergrass, Dori — included in the juried “Strong Waves” a group exhibit by the Women's Caucus for Art Northern California & Central Florida Chapters at Claudia Chapline Gallery in Stinson Beach, CA — May 5—27; her artwork was included in the “Spirit of the Dream” Juried Exhibition, International Association for the Study of Dreams at University Library Art Gallery, Sonoma State University in Rohnert Park, CA — June 15—July 27; in the “Art: Believe/Achieve” group exhibition of the Nat'l League of American Pen Women at the John O'Lague Galleria, Hayward City Hall in Hayward, CA — Aug 1—Sept 24; Established a group called “Rhythm & Hues”. SLMM members are Bill Carmel, Elaine Drew, Barbara Jean & Dori Pendergrass. “Rhythm & Hues” will provide one-person shows, 3—month intervals, in an art gallery within a dental facility at 21001 San Ramon Valley Blvd. San Ramon, CA through May, 2008. her artwork for “Rhythm & Hues” solo show at a gallery of fine art located in San Ramon Dental Center in San Ramon, CA — Nov 9—Feb 8, 2008



Above: “Blue Stockings”
by Dori Pendergrass

Peterman, Jane E. — had an open studio event on May 12th & 13th

Piastuch, Veronica — “Unfolding Art from Soho to Sobro” 4 Person Exhibition at the South Broadway Cultural Center in Albuquerque, NM — July 2nd — Aug 28th; she hosting a free panel discussion on “The Artful Life” at The South Broadway Cultural Center — July 11th

Pope, Laura — is the new Regional Coordinator for New Mexico — July.

Puckett, Terry Gay — took a group on a 9th Annual trip to Guatemala — Sept 10—19.

Rawlinson, Annemarie — In the “Assemblages” Exhibition at the Lucy Florence Cultural Center in Los Angeles — October; In the “International 9th Shoebox Sculpture Exhibition” in the University Art Gallery at California State University Dominguez Hills in Carson, CA. In conjunction with the reception on October 3, a conversation with artist Annemarie Rawlinson will be held at 6:00 pm in the gallery. — Oct 3—31

Reser, Barbara — She has artwork that is included in the KPR public radio station exhibition in Lawrence, Kansas. The artworks will be shown on the KPR website kansaspublishradio.org. — Oct 1-Nov 30

Rickard, Allyson — her Guadalupe collage “Sacred Image Inspires Workers” has been selected for a month in the 2008 Multifaith Calendar produced by the Multifaith Action Society of B.C. The collage tells the story of a sacred image (painting) of Our Lady of Guadalupe coming to Oakland, CA, during the Jubilee year of 2000. This same traditional image of Guadalupe was used in the 1960s by Cesar Chavez and the UFW in organizing farm workers. As the collage illustrates, today Guadalupe is still a “communing spirit”, communicating her love and strength to her people and inspiring them to work for social justice.

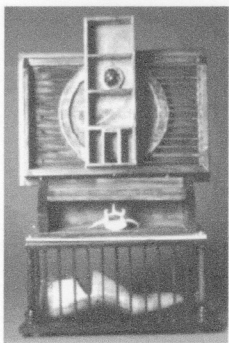
Seldon, Mervyn — she and two Claremont artists are showing their paintings in “Site Unseen” at 57 Underground in Pomona, CA — Sept 7th — Oct 28th. This artists’ gallery was started in the early 1980s in Fullerton by MFA students at Cal State Fullerton and moved to Pomona in 1998. Mervyn will also be showing her work with other Club artists at the Claremont Club in Claremont, CA in a benefit for the Beverly Lewis Cancer Center’s “Living Well After Cancer” program — October 5th.

Sitts, Jan — took a group to San Gimignano, Italy, in the heart of Tuscany — May 12—16.

Skinner, Delda — she had an exhibition entitled PEOPLE OF THE WORD at the Hill Country Arts Foundation in Ingram, TX — July 5—August 31; she is giving a lecture on Women of the Bible — Saturday, July 21; she was a keynote speaker at the Province 7 of the Episcopal Church Gathering, speaking on Art and Spirituality and taught an Artist Bookmaking workshop; she had an exhibition of her Series WOMEN OF THE WORD at the Episcopal Theological Seminary of the Southwest in the Spring; she taught a Lenten Series on the Evolution of Art; she will exhibit in the Texas SLIMMers “Time” exhibition in Houston and Dallas. She has been named the “Artist in Residence” for Austin Holistic Health. Her art will hang in their new building in Austin opening November 9th. She will have a two person exhibition entitled “Women of the Word” paintings by Delda Skinner and “Women of the World” by Nina Mihm at North Hills Methodist church, Austin Texas opening the first week of February. She is lecturing in Brenham, Texas at the gathering of the “Episcopal Church Visual Arts” group which is a the “Arts” arm of the National Episcopal Church.

Spangler, Leandra — in the “Layers Layers Layers” 3 person exhibit at the Bluestem Missouri Crafts inn Columbia, MO — June

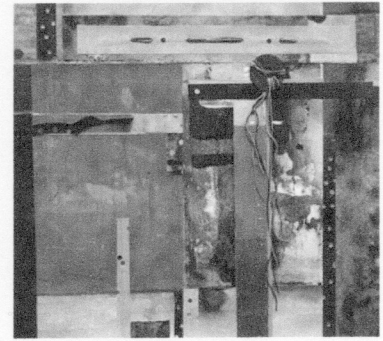
Stablein, Marilyn — Three assemblages: “Ode to the Muse”, “Secrets” and “Spirit Box” were included in both the regional and national SLMM shows at the Albuquerque Museum July—Sept; Two assemblages, “Spools and Dominos” and “Innocence” were included in the annual juried show of recycled art, Arte de Descartes VII sponsored by Wholly Rags in Taos, NM; Another assemblage, “Legacy” was selected to be included in Originals 2007 a biennial show sponsored by the New Mexico committee of the National Museum of Women in the Arts in Washington, DC. Catalogs are available for the juried show (Sept 28th—Dec at the Harwood Art Museum, Taos, NM) which features New Mexico women artists. A solo show, “Microcosm”, opened at the Outpost Performance Space on October 5th. A catalog is available for the show which features collage journals from Stablein’s New York period and assemblages. During the reception Stablein gave a short reading from her published books. A number of artists’ books were exhibited at the New Mexico State Fair garnering a first place, two second places and a third place. In the calligraphy category “The Secret Heart” with Tibetan calligraphy won Best of Show. The same assemblage was also included in “The Art of the Word: A Celebration of the Art of Calligraphy Throughout the World as Expressed by New Mexico Calligraphers” at the Arts Alliance Gallery, Albuquerque — May; Two artists books were also featured in “Altered Books: A Second Life” a Libros (Albuquerque Guild of Book Workers) sponsored exhibit at the



Above: “Legacy”

Albuquerque Library — June. “Recreating Life: The Artist’s Journal” was the subject of Stablein’s column, “It’s Her Life” in New Perspectives Magazine. She discussed the different types of journals she’s kept for decades: dream journals, written journals, and artist journals. “Ofrenda” a Day of the Dead altar is included in a group show at Off Center for the Arts in Albuquerque.

Staub, Carol — Awarded the Richeson Art Award at the International Society of Acrylic Painters 2nd Annual Florida Exhibition — Sept; Awarded the Fujie Wright Memorial Award at the Rhode Island Watercolor 14th Annual National Watermedia Competition — Sept; Her painting "Frontier II" was selected for the "Cover Art" of the book "Masters of Today—100 Contemporary Artists" published by World of Art Publishers, London, England — book will be available late Fall 2007 or early 2008.



"Frontier II" by Carol Staub

Sultan, Jenny Badger — her artwork was included in the "Spirit of the Dream" Juried Exhibition, International Association for the Study of Dreams at University Library Art Gallery, Sonoma State University in Rohnert Park, CA — June 15th—July 27th; has a "mask making workshop" at her studio on Sept 30 & Oct 7; held an open studio at her home —Oct 20 & 21

Ting, Mimi Chen — part of Marin County open studios — May 12 & 13; her work is at the D'Adamo/Woltz Gallery in Seattle, WA; She gave a solo performance at the private opening reception of SLMM 25th Anniversary Nat'l Exhibition in Albuquerque, NM — May 14th; she has a solo exhibition at the Art Beatus Gallery in Hong Kong — October.

Van Dyke, Patty — has a new series of giclees featured at the Masserella's Firehouse Pottery & Gallery who hosted the first SoMo progressive reception on May 25th; was part of a Studio Tour in Ojai, CA — Oct 13th & 14th

Wilbanks, Mary — hosted a workshop trip to San Miguel de Allende, Mexico — Jan 25th — Feb 2nd

Wong, Diana — was introduced as a new artists at the DSG Gallery in Albuquerque, NM — July 15th

Books / Videos / Articles

Finding Gifts In Depression by Carolyn Freeman Hansen

Depression can overwhelm you and everything you do. It can also provide you with a powerful opportunity to free your inner artist and write, sketch, sculpt, cook, or paint your way to a more authentic and more contented you.

When accomplished and talented artist Carolyn Freeman Hansen fell under the shadow of depression, she refused to let the darkness consume her. She turned to what she knew — art—and realized the remarkable healing and restorative powers of all things creative.

Hansen combines the honest and intimate account of her own triumph over depression with personal advice, creative healing exercises, and helpful resources for using art as a tool to summon strength, gain perspective, and find peace. Under Hansen's™ seasoned guidance, you will discover the many unexpected and precious gifts of depression, including courage, forgiveness, and spirituality.

Filled with images of Hansen's art and bursting with inspiration and encouragement, "Finding Gifts in Depression" gives you everything you need to become the person you were meant to be.

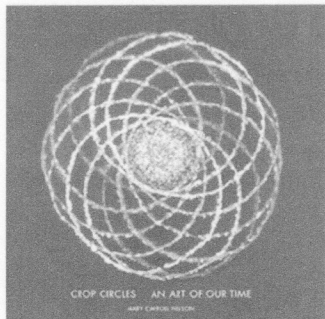
Her book was selected by the publisher as both their Editor's and Publisher's Choice. You may buy an autographed copy of her book at her web site: findinggiftsindepression.com. Or order books by visiting the website: iuniverse.com or calling 800-288-4677.

The Mission of Art by Alex Grey

Is recommended by Leslie Ebert as "a primer for all new SLMM members, what he has to say about the art making experience is so right on and wonderful."

Shamanism and the Modern Artist; Technicians of Ecstasy by Mark Levy

"It looks interesting as an analysis of artists through history accessing the spiritual in the creation of their work." Recommended by Leslie Ebert



Mary Carroll Nelson's

CROP CIRCLES, AN ART OF OUR TIME

featuring work by SLMMers, was published in July.

Soft cover is \$40

A boxed special edition with an art piece in it will be \$200.

Distributed by the University of New Mexico Press

Reading Suggestions by Beverley McInnes:

The Art Of Nursing', Expressions of Creative Art In Nursing, Second Edition edited by Cecilia Weindler (website: www.nursingknowledge.org/STTI/books ISBN 1-930538-16-2) After listening to Dr Barbara Dossey's presentation at the SLMM Conference in Albuquerque about Florence Nightengale, this book seemed to me particularly pertinent. SLMMer, Catherine Fraser is to be commended for her cover and back cover art, 'The Gesture Series', in the book. Catherine, a public health nurse living in Duncan, British Columbia, believes that art making and creativity in healing have great value in nursing today. She has also illustrated other articles throughout this beautiful hard cover bound 206 page assemblage of art, text and poetry. I think this is a book that anyone interested in our health care today should own. I have listed ways to order this book but am sure that Catherine would be able to assist in this process and her info is in our SLMM Directory.

I also picked up at the Conference:

Petroglyphs: Ancient Language/Sacred Art by Sabra Moore

Clear Light Publishers, Santa Fe, New Mexico.

Moore an artist living in northern New Mexico, has compiled this softcover book about a subject that has always fascinated me. Her drawings almost border on the whimsical but are true to their intent and her descriptions and text are invaluable to anyone interested in ancient native art. "A fragile bond across time and culture" certainly piqued my interest.

Artists Of The Spirit: New Prophets In Art And Mysticism by Mary Carroll Nelson published in 1994.

This softcover book of 16 artists' biographies, given to me by a friend, has been beside me all the way back to Nova Scotia on the plane and I have just about finished it as I write this review. I was, of course fascinated by Mary's writings of Meinrad Crieghead's very special creativity. Having visited her Studio in Albuquerque, the text came alive for me. Also, Barbara Hand Clow's chapter was most interesting after listening to her lecture at the Conference. Mary Carroll's new book *Crop Circles, an Art of Our Time* has been published and we all await its delivery but this 1994 work is a must read for any artist today.

The Art Of Pilgrimage: The Seeker's Guide To Making Travel Sacred by Phil Cousineau, Conari Press.

I discovered this special softcover book in a little book shop in Old Town, Albuquerque. It almost jumped off the shelf at me and is filled with Cousineau's lifetime of pilgrimages and vignettes as it triggers the imagination of all our inner and outer journeys. The Introduction is worth the price of the book and this leads into the publication that is sprinkled with illustrations and art. 'If Joseph Campbell, the Dalai Lama and Bill Moyers were to have collaborated on a book about journeys...I suspect it would look very much like "The Art Of Pilgrimage".'

Exploring Multiple Dimensions Catalog

The catalog celebrates the 25th Anniversary of SLMM

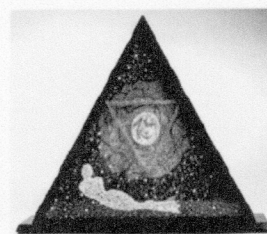
11"x8.5", 36 pages

It includes:

An Introduction Mary Carroll Nelson

A Forward by Nancy Dunaway;

Images from the National Exhibition as well as the
New Mexico Regional Exhibition



Exploring Multiple Dimensions

Membership price of the Catalog: \$15 + \$3 sh/h = \$18.

To order the Catalog, send \$18 in U.S. currency to: SLMM, PO Box 2332, Hot Springs, AR 71914

New Associate Members

Susan B. Askey
CO

Linda S. Gillis
SC

Shari Kalb
OR

Karen M. Lesniak
PA

Susan & Thomas May
PA

Ellen Sauer
IN

Elaine Viel
VA

Roster Corrections

Renewed members (from Inactive status):

Christine Kuhn (A)
KY

Bonny Lhotka (F)
CO

Patty Van Dyke (A)
CA

Officers

president

Nancy Dunaway

vice president

Ilena Grayson

executive administrator

Carleen I. Hearn

board of directors

Mary Hughes
Catherine Keebler
Kathleen Kuchar
Beverley McInnes
Nina Mihm

ex officio

Mary Carroll Nelson, founder
Richard Newman, past president

membership coordinator

Nancy Marculewicz

membership committee

Leslie Ebert
Marilyn Hughey Phillis
Priscilla Robinson

historian

Dawn McIntyre

representatives at large

Carole D. Barnes
Mary Todd Beam
Mary Carroll Nelson, founder

regional coordinators

Laura Pope — NM & International

Karen Becker Bendetti — IA, IL, IN, MI, MN,
OH, WI, WV & Central Canada: MB & ON

Carolyn Hansen — CO, ND, NE, SD, & WY

Linda Doherty — CA & HI

Leslie Ebert — AK, ID, MT, OR, WA &
Western Canada: AB, AL, BC, & SK

Agnes Eyster & Ann Hartley — KS, OK & TX

Caroline S. Garrett — DC, DE, GA, KY, MD,
NC, SC, & VA

Jean Hutchinson — FL

Veronica Morgan — CT, MA, ME, NH, NJ, NY,
PA, VT, & Eastern Canada:
NB, NL, NS, PE, & QC

Jan Sitts — AZ, NV & UT

David Stoddard — AL, AR, LA, MS, MO, & TN

SLMM is a non-profit organization founded in May 1982 in New Mexico.

There are two categories of membership.

Associate Membership is open to all interested persons.

Dues are \$35 per year, \$50 per couple, and \$50 for international members
— from July 1st through the following June 30th.

For an application form, please email a request to info@slmm.org or
send a SASE to SLMM, PO Box 2332, Hot Springs, AR 71914.

Application forms for Full Membership, with digital entries, and a handling fee of \$15, are
reviewed after the February 1st deadline by a three-person Membership Committee.