



the society of layerists in multi-media

"...the relationships in art are not necessarily ones of outward form, but are founded on inner sympathy of meaning." – Wassily Kandinsky

Table of Contents:

- SLMM National Conference
- News
- Letter from the President
- Workshops
- Regional News
- Member News
- Membership & Roster Changes
- Officers

2010 National Conference in Austin, Texas September 30th – October 3rd

You still have time to join the fun!

Contact Nina Mihm for more information

conference fees: \$250 per person includes six meals, transportation to venues, a renowned speaker, Mylene Dressler, a hands on workshop, an art exchange with Altoid Tin Shrines and an exhibition and reception at the Dragonfly Gallery at Rosedale (for prospectus for the exhibition contact Nina Mihm)

hotel: Radisson Town Lake Hotel www.radisson.com/slmm
or 1-800-333-3333 (mention SLMM)

\$119 per night includes taxes. This rate will be honored for a few days before and after the conference.

Cut off for hotel room: September 9, at 12am CST

SLMM Web Gallery Project

"GREEN PROJECT" will be on the SLMM website on July 1, 2010!

If you have not sent an image in, please do not hesitate to join in the fun — there is still time!

The next theme is **"ON THE LINE"**: Create a drawing on paper, 4" tall x 6" wide or LARGER

Send: 1) a digital image of the artwork: 4"h x 6"w (288x432 pixels) at 72ppi

2) an artist statement 75 words or less in length about why the piece fits the theme.

Deadline for the digital image: September 20th. Send the image to: Carleen Hearn.



*"Closet Art" by Bonnie Lhotka
36"x48"x3" photographic pigment
transfer on copper circuit board*

Deadline for the next newsletter: September 9, 2010

Please send information and images for the next newsletter to the editor: Carleen Hearn

Contact info@slmm.org for her email or mailing address.

SLMM Member Taught Workshops

- June 20-26** — Mary Wilbanks is offering an Art Tour of New Mexico including Taos, Ghost Ranch, (and a tour of Georgia O'Keeffe's home) Chaco Canyon and Santa Fe
For more information e-mail Mary.
- June 24** — Delda Skinner will teach a "The Shape of Things" workshop at the Dragonfly Gallery at Rosedale in Austin, TX. Fee \$100. For more information contact Dragonfly Gallery at Rosedale: dragonflygallery@att.net or 512-420-9000.
- June 25** — Delda Skinner will teach a "Monoprinting & Collagraphs Without a Press" workshop at the Dragonfly Gallery at Rosedale in Austin, TX. Fee \$100. For more information contact Dragonfly Gallery at Rosedale: dragonflygallery@att.net or 512-420-9000.
- July 1-29, Thursday evenings** — Nancy Egol Nikkal will teach a "Embellish Your Image-Play with Collage" workshop at the Pelham Art Center in Pelham, NY. High School — Adult; Fee: \$130/\$117 Members & Materials Fee: \$10. Call: 914-738-2525 to register: 2 spaces left.
- July 9** — Delda Skinner will teach a "The Shape of Things" workshop at the Dragonfly Gallery at Rosedale in Austin, TX. Fee \$100. For more information contact Dragonfly Gallery at Rosedale: dragonflygallery@att.net or 512-420-9000.
- July 23** — Nancy Egol Nikkal will teach a collage workshop at the Newark Museum in Newark, NJ Fee: \$72/\$80, Materials Fee: \$15 All Levels. Call 973-596-6607 to register.
- July 10** — Delda Skinner will teach a "Monoprinting & Collagraphs Without a Press" workshop at the Dragonfly Gallery at Rosedale in Austin, TX. Fee \$100. For more information contact Dragonfly Gallery at Rosedale: dragonflygallery@att.net or 512-420-9000.
- July 29-August 4** — Rowena Pattee Kryder will facilitate a week long intensive on an 81 image mandala. Participants can come to Edgewood, New Mexico (in the mountains east of Albuquerque) for creative, enlightening insight into their soul purpose and how to express it. The 81 image mandala will be used as a matrix for discovering your inner life journey. The 81 images are color cards that participants pick during meditations. Their placement in the mandala as a whole tells a significant cosmic story. \$100 deposit is requested to hold your space. For more information contact Rowena: 505-286-2714 or email: rowena@creative-harmonics.org. www.creative-harmonics.org
- August 20 & 21** — Joan Fullerton will be teaching a mixed media collage workshop in her studio in Taos, NM (and 22nd as an optional day) All materials are provided and the cost is \$120. per day. Contact Joan to enroll.
- August 23-27** — Lana Grow will be teaching a 5 day workshop "# 1 Aqua Media & Acrylic and Collage, Experimental and Energizing" at the White Bear Center for the Arts in White Bear Lake, MN. For more information and Registration contact Danielle Cezanne at 651-407-0597 or www.whitebeararts.org
- September 16-19** — Marilyn Hughey Phillis & Cheryl Ryan Harshman will teach "Celebrating the Creative Spirit" workshop at the Sandscree Conference Center near Wheeling, WV
For more information contact: Marilyn at: www.celebratingthecreativespirit.blogspot.com
- Sept. 26, to Oct. 3** — Patricia Abraham will be teaching a watermedia workshop in Santa Fe, NM
For info & a brochure about the workshop, please contact:
Carolene Armer at: Carolene.msbcglobal. or call at: (916) 962-9030 or cell: (916) 342-4936
- October 4-8** — Jan Sitts will be teaching a 4 day Mixed Media workshop at Cheap Joe's in Boone, NC
For more information contact Jan Sitts: jan@jansitts.com.
- October** — Judi Coffey will teach a collage workshop in Dayton, OH (date to be announced)
For more information contact Judi Coffey.
- October 25-29** — Lana Grow will be teaching a 5 day workshop in Mathews, VA at the Bay School of Arts
For more information and Registration contact Grace W. Small at 804-725-1278

President's Letter

Greetings SLMM members,

The hot days are upon us here in Texas. I was holding out for a little more spring type weather but I think those cooler days are past.

I have been busy, busy! Life just does not seem to slow down. Is it possible that I just fill any empty time when it is available? As most of you know, a lifelong dream of mine came true. Last December I started to remodel a building. On May 6, I opened my doors and had my first exhibition and reception. Dragonfly Gallery at Rosedale is up and running. As excited as I am for the gallery, I am truly excited about the accompanying workshop teaching space. And so the work begins....

Besides my personal art venture I have been working on the finishing touches for the fall SLMM National Conference. At this point we are around 55 attendees. I hope more of you see your way clear to attend and enjoy the camaraderie that is synonymous with SLMM. We have much to celebrate in Austin. "Visual Journeys-Art of the 21st Century" will be released during this conference. I have such fond memories when our last book was released in Hot Springs. I was so determined to get everyone's signature on their image in my book and talk about their piece. It was a great time to spend with everyone. Our new book has every reason to be even more impressive. Mary Carroll Nelson has worked endlessly on editing and proofing. Carleen Hearn has kept all transports of images and monies straight. Both of them deserve our utmost, heartfelt gratitude for their endless devotion to see this project to completion.

The board has two, also devoted, SLMM members retiring: Kathleen Kuchar, KS serving 6+ years and Mary Hughes, CA serving 4+ years. They have been tremendous to work with and I shall miss their insightfulness and dedication towards SLMM. You should have received your ballot with the dues renewal for the upcoming year. I am proud to announce and welcome our new board members: Lana Grow from MN and Jean Nevin from NM. Rae Friedman Dollard, TX is stepping up to fill the spot vacated by Mary Hunter, TX. We thank you Mary and wish you well. You did a tremendous job in making the SLMM Web Gallery a reality. I have really enjoyed viewing the last two exhibits.

The West Region has a new Coordinator Win Ratz. The Midwest Region has a new coordinator, too, Marie Dolmas Lekorenos. Thank you ladies for stepping up. We still have two areas with no coordinators: Florida and the Mid Atlantic Region. Not sure what else to do; I have sent out letters to these respective regions, to no avail. I keep using the same example of my two friends and co-coordinators of the TX, KS & OK Region, Ann Hartley and Aggie Eyster. They have had their positions for years and will probably keep doing it for years. How bad can it be???? Please check with them if you want the inside details of the position.

Hope you are all creating and enjoying life to its fullest. All you attending the conference, do not forget to create your Altoid Tin Shrines for the exchange. If you don't come with one for the exchange, you won't leave with one! I just know they will be uniquely creative and fabulous.

Looking forward to seeing many of you in the fall,
Nina Mihm – president



*"All Paths Lead Home" by Win Ratz
18"x22" watercolor*

Opportunity

The National Watercolor Society is having their 90th Annual Exhibition in October, 2010.

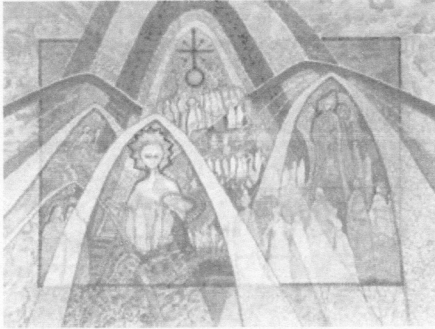
The deadline will be the 26th of June. The prizes are incredible... This year's judge will be Christopher Schink, an internationally known painter, author and Instructor.

If you are interested please download the prospectus: www.nationalwatercolorssociety.org

— recommended by Jody Wiggins

A Circle of Prayer

Linda Dumas' husband — "Please join me in my thanks to God that my husband has been dismissed from the head and neck cancer department of M.D. Anderson, and will now be seen at the Cancer Survivor's Center" — Linda



*"The Rhelms" by Juanita Williams
30"x40" watercolor & pro white ink*

In Memoriam

Carol Bryant — The New Mexico Branch of SLMM reports with deep sadness the death of Carol Bryant on June 15th, from heart failure as a complication of encephalitis. For a few weeks we were filled with hope as she seemed to be recovering. At our last meeting of the season, Mabel Culpepper told us she had just looked at her emails before arriving, and she gave us this news. Carol was a very talented artist and a generous member of the art community. She has left a vacancy in every group in which she was active. Her illness prevented her being the hostess for the March meeting, but it was typical for her to volunteer for these tasks that keep our group active. We will all miss her, as will many artists in the city.

Sally Williams — "It is with great sadness that I send you all news that my sweet friend, Sally Williams, died on April 20, 2010 at a hospice facility in Little Rock. Sally was diagnosed with metastatic brain cancer in mid-December 2009 and chose to quietly retire and privately deal with her disease until her passing. She died with the same grace and dignity with which she lived. Sally graciously agreed to handle all the finances for the 2004 National Meeting in Hot Springs. Ever meticulous in keeping track of every detail, she made our job in planning the meeting a manageable task. Sally served as the Artist Services Manager for the Arkansas Arts Council for the past 25 years. Her art appeared in "The Art of Layering ". Her work was exhibited in many solo shows across the south and is in the permanent collection of universities, the Arkansas Arts Center, & Historic Arkansas Museum. She will be greatly missed." — Nancy Dunaway

Regional News

April 11th — a number of CASLMM members gathered for a meeting and tour of "journeys" at the Gallery at the Cheese Factory in Petaluma, Marin County, CA. Claudia Chapline curated the show.

June 19th — Jaleh Etemad is hosting a CASLMM members meeting in Tiburon, CA from 9:30am to 4pm. They will have a pot luck lunch and share images of their work.

August 1-27 — The Southern New Mexico Chapter will have an exhibition "Re-Emergence: Old to New" at the Tombaugh Gallery, 2000 Solano Drive, Las Cruces, NM. The opening reception is on Sunday, August 1, from noon to 2:00 p.m.

Member News

Amitai, Renee — has a solo show at the LA Artcore Gallery at the Union Center for the Arts in Los Angeles, CA — July; she will be in Paris, France in September and October to exhibit a few sculptures-installations.

Anderson, Karen Rand — will have a solo show at Alexey von Schlippe Gallery, at Univ. of Connecticut's Avery Point Campus in Groton, CT — Nov

Barnes, Carole D. — is one of twenty-four artists chosen for the 2nd Invitational Exhibition of Contemporary International Watercolor Masters: North American Division to be held in Nanjing, China

Biehl, Julianne — in the Boston Printmakers Members Show 2010 "think" at the Zullo Gallery, Center for the Arts in Medfield, MA — June 13- July 13; she has two pages of art in "International Contemporary Masters 2010, vol. III" published by World Wide Art Books; in exhibition with artists from the book at the Southern Nevada Museum of Fine Arts in Las Vegas, NV — June 19-Sept 4

Brown, Ann Winston — in "The Power of Nine" at the New Jersey Arts Incubator Gallery in West Orange, NJ — Apr 11-May 9

Chapline, Claudia — curated the show "journeys" at The Gallery at the Cheese Factory in Petaluma, CA — Apr; in "California Dreaming" at the Hilltop Gallery at Mountain Meadows in Ashland, OR — May 30-Aug 23

Coffey, Judi — will be jurying the "2010 Grand National Watercolor Exhibition" in Jackson, MS and doing a 5 day workshop — Sept

Crain-Jager, Sally — "I can't believe Bob and I have been here in Santa Fe for a little over a year now! It takes that long to get settled, I now know: yard, house, community, and our STUDIO work!

Bob is composing music and doing lots of correspondence with musicians across the country. He has been prolific throughout his career, and now he is re-visiting some of the pieces he's composed in the past, as well as creating new works. I'm working hard in my studio-4-minutes-away-from-home! I've created a new body of work since the beginning of the year,

with a consistent theme of rocks: lots of multi-media texture! I will participate in the Santa Fe Studio Tour June 19 and 20, sharing a space with several other artists in a studio much bigger than mine!

www.santafestudiotour.com I will also participate in an exhibit at the Parkway Artspace in Santa Fe the weekend of Aug. 14 and 15. I'm hoping to connect with the Albuquerque Layerists much more in the future!"



*"Splash" by Sally Crain-Jager
20"x20" Mixed media*

Cummings, Marie — in a solo show "Freedom of Expression" at the Mural Gallery, Stamford NY — Apr 11-May 9; Columnist Celin Schoen describes "the display included whimsical acrylics, collages, water colors, and mixed media pieces by the artist, who now makes her home in Treadwell."

Deitrich, Pamela — in "The Power of Nine" at the New Jersey Arts Incubator Gallery in West Orange, NJ — closes June 30

Dollard, Rae — in "Art Posse 5" at the Dragonfly Gallery at Rosedale in Austin, TX — May 6-June 4

Eaton, Renee — in the show "journeys" at The Gallery at the Cheese Factory in Petaluma, CA — April; in "California Dreaming" at the Hilltop Gallery at Mountain Meadows in Ashland, OR — May 30-Aug 23

Etemad, Jaleh — in the show "journeys" at The Gallery at the Cheese Factory in Petaluma, CA — April; in "California Dreaming" at the Hilltop Gallery at Mountain Meadows in Ashland, OR — May 30-Aug 23

Farr, M.K. (Kathy) — in a two artist exhibit of new work at Envision Gallery in El Prado, NM June 20-July 31

Frank, Jane Winders received an Honorable Mention for her mixed media entry "Peaks' Winter" in the More Than a Mountain juried show in Bedford, VA; has her mixed media piece "Of Scottish Queens and Castles" in the 7th annual exhibition Art at VMRC. "This is a national show and is really impressive. I saw it on Saturday. I understand it will be on the web this week. Worth a look."

Frech, Sandra — in "The Power of Nine" at the New Jersey Arts Incubator Gallery in West Orange, NJ — Apr 11-May 9

Gibson, Betty Grace — had 3 miniature paintings in the 1st Annual Miniature Show at the Art Gallery in Westminster, CO; she won Best of Show in the Broomfield Art Guild Membership Show and Best of Show in the 1st Annual North Metro Arts Alliance Member's Show at the Aar River Gallery in Westminster, CO; she received an honorable mention in the 13th Annual North Metro Arts Alliance Show open to Colorado artists.

Girard, Theresa — has a solo show of her new work "airing laundry" at the Cheeky Monkey Restaurant in Narragansett, RI beginning in July

Gwinn, Helen — has a solo show "Transitions" at The Art Gallery in Roswell, NM — June 1-28

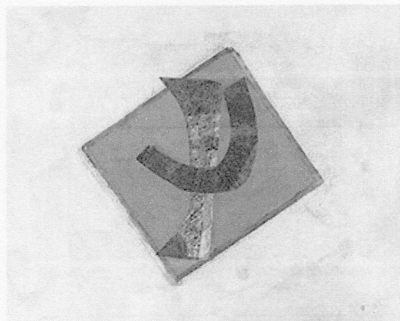
Harrison, Alice — in "The Power of Nine" at the New Jersey Arts Incubator Gallery in West Orange, NJ — Apr 11-May 9; in "Reality & Artifice" 2010 New Jersey Arts Annual exhibition at the New Jersey State Museum in Trenton, NJ — May 8-Oct 31; in "Information Revisited" at the Belskie Museum in Colster, NJ — June 6-27; one of 40 artists featured in "Masters: Collage" — June

Harnick, Sylvia — has a solo show "Rising to the Surface" at Ariel Fine Art, Locust Valley, NY — May 14-June 19

Hartley, Ann Bellinger — in "Art Posse 5" at the Dragonfly Gallery at Rosedale in Austin, TX — May 6-June 4

Hughes, Mary — in "California Dreaming" at the Hilltop Gallery at Mountain Meadows in Ashland, OR — May 30-Aug 23

Insero, Elaine — her monoprint "Chalice," will be on exhibit with the Monotype Guild of New England's national juried show entitled "Unlimited Visions: One of a Kind Print" at the Endicott College, NewCenter for the Arts, in Beverly MA — Oct 16-Dec 22



*"Chalice" by Elaine Insero
monoprint from her Color Series*

Jean, Barbara — in "California Dreaming" at the Hilltop Gallery at Mountain Meadows in Ashland, OR — May 30-Aug 23

Johnston, Ann — sixteen images of her work (11 complete and 5 details) are in "1000 Artisan Textiles"

Knoles, Nancy — in "California Dreaming" at the Hilltop Gallery at Mountain Meadows in Ashland, OR — May 30-Aug 23

Kralj, Dusanka — in "California Dreaming" at the Hilltop Gallery at Mountain Meadows in Ashland, OR — May 30-Aug 23

Kryder, Rowena Pattee — has been working on a new 81 image mandala for a year and it will be finished by July 29. Between July 29 and Aug. 4 she will facilitate a week-long intensive. See Member Taught Workshops in this newsletter for more info.

Ledesma, Beatriz — has solo exhibition "Not Quite There Yet" at the Elephant Room, Inc Art Gallery in Chicago, IL — June 13-July 22;

Leites, Ara — in "California Dreaming" at the Hilltop Gallery at Mountain Meadows in Ashland, OR — May 30-Aug 23



Lenker, Marlene — Yale-New Haven Hospital has purchased five of her major paintings for the Smilow Cancer Center. The grand opening will be on June 12th. Barclay Inc., Lmt. has purchased five 15"x15" for their permanent collection; Kaiser-Permanenti has purchased a major painting for their lobby at corporate headquarters in CA.

Left: "Santa Fe XXV" by Marlene Lenker, 36"x48" acrylic on canvas

Love, Marianna — husband, Ray Varlinsky, has converted a rental building in downtown Paradise, CA into a gallery for her named LOVE'S VIBRANT ART.

Lovin, CaroleAnn — "Firebird Feathers" and "River Rocks", two of her needlepoint wall hangings were recently juried into Fiber Forum. A section of the Embroiderer's Guild of America, Fiber Forum promotes embroidery as an art medium. She took up doing needlepoint stitching a little over a year ago when she returned home after surgery and discovered she could not return to threading her large 4-harness loom to continue her weaving.

Mankoff, Valerie — in "The Power of Nine" at the New Jersey Arts Incubator Gallery in West Orange, NJ — Apr 11-May 9

McCandless, Patsie — presented her lecture "The Magic of Paper" (on her PaperSolo art) for the Sterling Society, at the Dunedin Fine Arts Center in Dunedin, FL — May

Mihm, Nina — in "Art Posse 5" at the Dragonfly Gallery at Rosedale in Austin, TX — May 6-June 4

Nevin, Jean — Had a book signing of her new book "Autobiographica — The Evolution of an Artist" and gallery talk "Your Hidden Creativity — Finding It and Feeding It" at the Weyrich Gallery in Albuquerque, NM — May 15

Newman, Richard — in "The Mythical State of Jefferson" at the Schnieder Museum, Southern Oregon University in Ashland, OR — May 6-June 12; in "Where the Wild Things Are" at Benson City Hall in Benson, AZ — Apr 24-May 30; in "Art at VMRC, 2010" at the Park Gables Gallery in Harrisonburg, VA — May 28-June 30

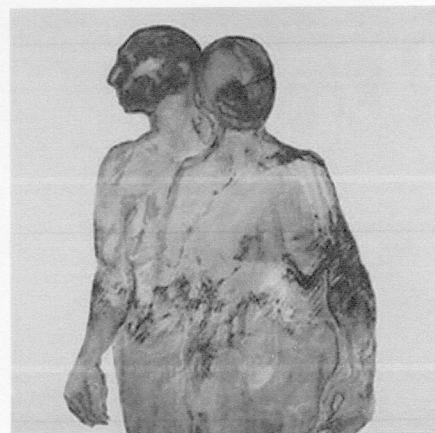
Newman, Rochelle — in "Art Inspired by Science" at Southern Oregon University — June 13-Sept 10

Nikkal, Nancy Egol — in "The Power of Nine" at the New Jersey Arts Incubator Gallery in West Orange, NJ — Apr 11-May 9; in the Faculty and Student Showcase, Pelham Art Center, Pelham, NY — July 9-Aug 15; in the 61st Annual Art of the Northeast at the Silvermine Guild Arts Center in Cannan, CT — March; in the 12th International Collage Exchange online show; in the "What's New 2010" show by Studio Montclair, Inc, Montclair, NJ — June; in "Show & Tell 2" at the Blue Door Gallery in Riverdale, NY — May 15-June 19; will give a talk about "Seeing Color, Feeling Music" at the Blue Door Gallery on June 19.

Phillis, Marilyn Hughey — juried the national exhibition of the Watercolor Society of Alabama at the Johnson Center of the Arts (a renovated post office: classical revival style, c1911) in Troy, AL; is one of twenty-four artists chosen for the 2nd Invitational Exhibition of Contemporary International Watercolor Masters: North American Division to be held in Nanjing, China

Poulson, Karen — in "Moore Inspired: Contemporary Responses to Henry Moore" at the Gates Garden Court Gallery in the Denver Botanic Gardens, Denver, CO — June 29-Aug 1

Puckett, Terry Gay — reports that she had a fabulous trip to Guatemala with 17 feisty friends, and made it back two weeks before Pacaya erupted and the mudslides hit. She is going to Ecuador and the Galapagos Islands November 9-23rd. "There are three places left at this time. Join us!" Check it out at <http://www.exploreguatemala.com>.



*"Duality" by Karen Poulson
40"x40" acrylic on panel*

Ratz, Win — has been accepted into the Wyoming Arts Council teaching roster. Her two day workshop on enameling on metal on June 12 and 13 is filled, and has a waiting list. The emphasis is on play and exploration.

Rickard, Allyson — in "California Dreaming" at the Hilltop Gallery at Mountain Meadows in Ashland, OR — May 30-Aug 23

Rumpel, Helenn — her piece "Holy Family" was purchased by The First Presbyterian Church in Carlsbad, NM to be retained permanently in the sanctuary. — May

Ruyle, Lydia — her Goddess Icon Spirit Banners are flying at the 15th Goddess Conference "Goddess as Lover" in Glastonbury, UK — July 28-Aug 1; at the Spanish Goddess Conference in Madrid, Spain — Sept 24-27; at the GAIA Goddess Conference in the Albert Waterways Community Centre in Broad Beach, Australia — Oct 15-17

Seidel, Barbara — in "California Dreaming" at the Hilltop Gallery at Mountain Meadows in Ashland, OR — May 30-Aug 23

Seldon, Mervyn — solo show "The First Fifteen Years" (1995-2010) at 57 Underground in Pomona, CA — May 7-31

Shaffer, Susan — received Honorable Mention for a framed mixed media piece entitled "Avian Ensemble"



"Lidded Vessel #10"
by Susan Shaffer

from the ArtCenter Manatee in Bradenton, FL in their "A Perfect Ten" juried exhibition; received Honorable Mention for a framed mixed media piece entitled "Wood Watchers" from the Punta Gorda Visual Art Center in Punta Gorda, FL in their "Firecracker" juried exhibition; received Third Place for a wheel-thrown mixed media piece entitled "Lidded Vessel #10" from the Visual Art Center in Venice, FL in their "Found Objects" juried exhibition.

Sitts, Jan — solo show "Jan Sitts: Spirit of the Landscape" at VC Gallery of Fine Art Sedona— April; in "The Festival of Fine Arts" show in Sedona, AZ — October

Skinner, Delda — in "Art Posse 5" at the Dragonfly Gallery at Rosedale in Austin, TX— May 6-June 4

Stablein, Marilyn — has a new poetry book, "Splitting Hard Ground," from La Alameda Press in Albuquerque. Recent poems were published in The Rag, Sage

Trail and Sin Fronteras. She has 5 recycled works in "Resurrections: ECO-logy & ECO-nomy: A Functional Trash-Art Show" at the Canyon Gallery in Boulder, CO. Her artists books and assemblages have been exhibited in New Mexico at the Albuquerque Public Library; La Mesa Library, Los Alamos; Pages Gallery, El Dorado; the Convento Gallery, Espanola, and the Off Center Gallery, Albuquerque. She won Best of Show at "Book It! "for her artist book" NUMERALS: Units & Equations" which was exhibited at the Richardson Gallery, Branigan Cultural Center in Las Cruces, NM

Wilbanks, Mary — in a two artist exhibit of new work at Envision Gallery in El Prado, NM — June 20-July 31

Wong, Diana— solo exhibit "Simultaneous Horizon" at the ADC Contemporary Art Gallery in Los Angeles, CA— May 1-31

Wood, Juliet — had 2 large prints purchased for 2 unusual new palliative care units at San Francisco General as well as greeting card image for their personal use; she is hosting a 15 painting show for her mentor, Kathleen Larisch, in her gallery; in "California Dreaming" at the Hilltop Gallery at Mountain Meadows in Ashland, OR— May 30-Aug 23

New Associate Members

D'Ann Bourne
CA

Suzan Foy
CO

Susan Shaffer
FL

Claudia Bujold
NC

Phyllis J. McGuire
NM

Odile Burton
TX

Lisa Richey
TX

Roster Changes

Renewing members

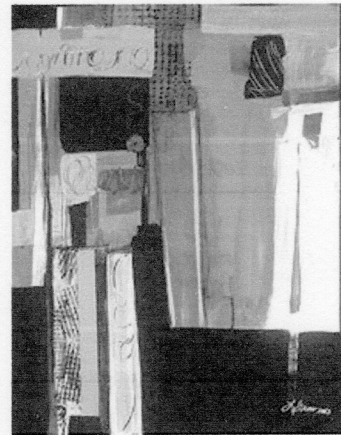
Sandra J. Frech (A)
NJ

Julie Medow (A)
NM

Susan Frary (A)
NM

Nancy Southern (A)
WA

Shari Kalb (A)
OR



"Catch the Rhythm Join the Party"
by Lana Grow
30"x22" acrylic

Officers

president

Nina Mihm

vice president

Catherine Keebler

executive administrator

Carleen I. Hearn

board of directors

Mehri Rae Dollard

Lana L. Grow

Beverley McInnes

Lynn C. Mikami

Jean Nevin

ex officio

Mary Carroll Nelson, founder

Richard Newman, past president

Nancy Dunaway, past president

membership coordinator

Kathleen Kuchar

membership committee

Nancy Egol Nikkal

Marilyn Hughey Phillis

Nancy Young

representatives at large

Carole D. Barnes

Mary Carroll Nelson, founder

regional coordinators

Leslie Ebert – AK, ID, MT, OR, WA &

Western Canada: AB, AL, BC, & SK

Jaleh Etemad – CA & HI

Agnes Eyster & Ann Hartley – KS, OK, & TX

Marie Dolmas Lekorenos – IA, IL, IN, MI, MN,
OH, WI, WV & Central Canada: MB & ON

Veronica Morgan – CT, MA, ME, NH, NJ, NY,
PA, VT & Eastern Canada:

NB, NL, NS, PE, & QC

Laura Pope – NM, AZ, NV, UT &
International

Win Ratz – CO, ND, NE, SD & WY

David Stoddard – AL, AR, LA, MS, MO, & TN

Open positions – DC, DE, FL, GA, KY, MD,
NC, SC, & VA

SLMM is a non-profit organization founded in May 1982 in New Mexico.

There are two categories of membership.

Associate Membership is open to all interested persons.

Dues are \$40 per year, \$55 per couple, and \$50 for international members
— from July 1st through the following June 30th.

For an application form, please email a request to info@slmm.org or
send a SASE to SLMM, PO Box 2332, Hot Springs, AR 71914.

Application forms for Full Membership, with digital entries, and a handling fee of \$20, are
reviewed after the February 1st deadline by a three-person Membership Committee.