

Fall Newsletter, 2023, Vol. 117

Society of Layerists in Multimedia

"...the relationships in art are not necessarily ones of outward form, but are founded on inner sympathy of meaning."--Wassily Kandinsky

Message from the President –

I am so very honored to be writing this note as the new President of The Society of Layerists in Multi-Media! Thank you for your support and confidence in voting me into office.

I LOVE SLMM as it has changed my life and my art in the 5 years that I have been a member. I live in an extremely rural area of north central Kansas. It has been the most wonderful experience to meet, first the Kansas group of SLMM members, and then, starting in December, 2019, to meet so many members on Zoom, from Hong Kong, Canada, coast-to-coast and border-to-border of the USA. Thank you all for welcoming me into your fold and now to trust me to lead this amazing group into the future.

I have THE most amazing Board of Directors: Terri MacDonald, Treasurer, Oklahoma; Jean Warren, California; Sue Burke Harrington, Vice-President, Texas; Georgia Mason, North Carolina; Judie Bordic, Texas; Nicola Mason, Ohio; and Rebel Mahieu, Kansas. They are all committed to the premise of SLMM and are all working on various committees to make sure SLMM stays up-to-date and offers various programs, exhibits, a book club, demonstrations, workshops, special projects, Zooms, discussions, professional growth assistance, and much more, which all work towards keeping us engaged and connected.

I would love to get to know all of you. You are always welcome to share your ideas, experience, and brainstorming on the SLMM Website Forum, SLMM Facebook, Zoom or email me personally (stevensbjc@gmail.com). Let's keep the lines of communication open and STAY CONNECTED!

Hugs to my SLMM family,

Jo

Barbara Jo Converse Stevens
President & Membership Chair

PS: Every Monday I will be putting some bits of information / activities on our website homepage under "Note from the President". Check it out.





The Board of Directors and Executive Administrator

Top Row: Rebel K. Mahieu, Sue Burke Harrington (Vice-President), Barbara Jo Converse Stevens (President)

Middle Row: Jean Warren, Nicola Mason, Terri MacDonald (Treasurer)

Bottom Row: Georgia Mason, Karen Van Hooser (Executive Administrator), Judie M. Bordic



As your newsletter editor, it has been a joy to witness first-hand the results of networking, sharing, brainstorming, and lots of laughter along the way. So much has been accomplished this past year. I believe much of this is because of the amazing teamwork of a “working board” with committees and commitment to make SLMM what it is. Mary Carroll Nelson’s vision for this organization is in good hands.

Breaking News!

You heard it here! The board is making plans for an in-person conference in 2025! Yes, it is true! Is it too early to start packing our bags? It is not too early to get very excited for finally getting back to our SLMM conferences. The board will let us know more as the plans unfold.

Website and Social Media

The newsletter is important, but the **Website** is where we can become more involved. We thank our Website & Web Gallery Design & Administrator, Susan Dreiling, for her easy to navigate and beautifully designed SLMM website. But she can’t do it alone. Susan relies on the Website Committee chaired by Sue Burke Harrington and committee members Liz Ruest and Barbara Jo Converse Stevens.

Since the newsletter comes out just a couple of times a year, how do we keep informed between those newsletters? It is the website! Why wait until the next newsletter to share your events? We have you covered! Open the website and click on News. Scroll down to Member News and **click here to submit** your news and events. You can also share on the **Forum**. You will enjoy browsing the categories of **News, Artists, About, and Forum**. We also are active on **Instagram** and on our **private SLMM Group Facebook page**.

The Forum

Sue Burke Harrington tells us about the Forum, a page on our website, slmm.org/forum. It is a private Forum and only SLMM members can join. If you haven't joined yet, please do. Yes, you will need a username and password, but you can have your computer save them or just sign in with Google. You can also use your email address. Once in the Forum, you can view a lot of information from our members including demonstrations and even recipes for Gesso Juice! **Here is how to post in the Forum.** Click on the **red button** on the right, **CREATE NEW POST**, and a window will open where you will write your post. It will ask for a title and the category that you want it published into such as Book Club. At the bottom of the window there are icons: a camera for photos, a movie camera for videos, even emojis! When you are finished, just click on the **PUBLISH** button. It's easy and I will virtually hold your hand with a text, phone call or Zoom! I really don't mind posting for you, but it's so much better to be enabled to do it yourself! Also, it's a great place to explore! *Sue Burke Harrington*

Book Club

It was on June 24, 2022, when the Book Club had its first Zoom meeting. According to Sue Burke Harrington, this group is very active, and if you like to read art books, this is the place for you. This is just one more valuable way to interact with other SLMM members. So far they have read books on Brian Rutenberg, Robert Rauschenberg, Romare Bearden, Georgia O'Keefe, Ruth Asawa, as well as *Artists of the Spirit*, a book written by our founder, Mary Carroll Nelson. They also enjoyed the book *Ninth Street Women* by Mary Gabriel. An additional twist to the Book Club is an occasional project with members creating artwork inspired by the artist, yet in their own style. [View the virtual exhibition here](#). So far they have created artwork inspired by Bearden and Rauschenberg.

On the Book Club page in the Forum, Judie Bordic wrote, *I've enjoyed reading Mary Carroll Nelson's material and especially her method of generously including the reader in an important period of her life, while she conveys multitudes about those individuals who influenced and clearly guided her path.* Robin Brooks wrote, *I'm excited to learn more about Ruth Asawa, her life story and her art.* **You can join in on the conversation by going to the Book Club found on the Forum.** You will be surprised at just how much information is on this page, even links to YouTube videos about our latest books. It is easy to join one of the Book Club Zoom meetings by going to the Calendar of Events on the SLMM homepage and clicking on the link to the Book Club. They usually meet the fourth Friday of every month.


Instagram

Nicola Mason, board member and Co-Advisor of the Communication and Social Media Committee, has been so helpful in assisting SLMM members with Instagram. Here are the step-by-step directions written by Nicola. For all questions relating to Instagram, her email is masonnf@ucmail.uc.edu


We are active on Instagram! We realize Instagram can be intimidating for the uninitiated. Below are some simple steps for hopping on IG (as the kids call it), and once you are on, it's easy to post images of your work (especially if you have an iPhone) and reach a wider audience. SLMM has an account that you can piggyback on as well. When you post your image to your account, just tag (meaning use a number sign/hashtag) #SLMM_US, and your work will appear on a "feed" with images of the work of other SLMM members who are similarly "tagging" their posts. And if you let Nicola Mason know when you join IG and give her permission to "repost" your images, she can also share them on the SLMM Instagram grid! Now for some instructions:

There are two ways to create an Instagram account. You can create a new account from the Instagram app or Instagram.com. If you already have an existing Facebook or Instagram account, you can use your existing account to create a new Instagram account. Both accounts will be added to the same Accounts Center and have access to connected experiences.

To create an account if you are new to Instagram and don't have a Facebook account:


1. Download the Instagram app from the [App Store](#) (iPhone) or [Google Play Store](#) (Android).
2. Once the app is installed, tap  to open it.
3. Tap **Create New Account** and enter your email address or mobile number, then tap **Next**. If you sign up with email, make sure you enter your email address correctly and choose an email

address that only you can access. If you log out and forget your password, you'll need to be able to access your email to get back into your Instagram account.

4. Enter the confirmation code sent to your email address or mobile number, then tap **Next**.
5. Create a password, then tap **Next**.
6. Enter your birthday, then tap **Next**. Use your own birthday, even if this account is for a business, a pet or something else. Learn more about [why we ask for your birthday](#).
7. Add your name, then tap **Next**.
8. [Create a username](#), then tap **Next**.
9. Read Instagram's terms and policies, then tap **I agree**, if you agree to the terms, to create your account.
10. Add a profile picture, then tap **Next**.
If you'd like to add a profile picture later, tap **Skip**.
11. If you want to share your profile picture as your first post, tap , then tap **Done**.

To create an Instagram account using an existing Facebook account:

If you create a new Instagram account using your Facebook account, both accounts will use the same login information. You may also be able to sync profile information across your accounts, like your name, profile picture, username and avatar. You can manage profile syncing at any time in your [Accounts Center](#).

1. Download the Instagram app from the [App Store](#) (iPhone) or [Google Play Store](#) (Android).
2. Once the app is installed, tap  to open it.
3. When your Facebook account appears, you can:
 - Tap **Continue as [name]** to learn more about what happens when you create an Instagram account with your Facebook account.
 - Choose not to use your Facebook account and tap **Create new account**, then follow the steps above to create a new Instagram account.
4. To create an Instagram account with your Facebook account, tap **Yes, continue**, then tap **Next** to sync your name, profile picture and avatar across apps. You'll be prompted to log into your Facebook account if you're currently logged out.
5. To create an Instagram account without your Facebook account, tap **Continue without Facebook**.
6. [Create a username](#), then tap **Next**.
7. Read Instagram's terms and policies, then tap **I agree**, if you agree to the terms, to create your account.

If you created your account recently, people on Instagram may see that you have a new account. Learn about keeping your [account secure](#).

You may be asked to save your login info. If you choose to save your login information, you won't need to enter it the next time you log back into your account.

For all questions relating to Instagram, Nicola's email address is masonnf@ucmail.uc.edu

Still more ways to connect: Facebook, Zoom, Open Studio Zoom, Web Gallery, Special Projects.

[Your SLMM organization is one of the few that I know of that provides so much for your membership dues.](#)

Facebook Group Page If you aren't already using it, please join us. Among other things, we post artwork that might be finished or maybe needing a critique by other members. Nothing better than posting privately and getting feedback from other members.

Zoom. Quite a few members find Zooming to be a great way to stay connected. Links to the Zoom meetings can be found on the website Events Calendar.

Open Studio Zooms are on Monday and Saturday afternoons. This one is fun! Even if you aren't working in the studio during the Zoom, you can still join in the conversation. The link is on the SLMM website Calendar.

Web Gallery Susan Dreiling has made it a breeze to submit your artwork for the Web Gallery. The theme for the next exhibition is "Words-Text" with a deadline of January 1st. The current exhibition, "Music in Our Souls" can be seen on the banner on the homepage.

Special Projects Committee is co-chaired by Judie Bordic, Vicky Lennon and Nancy Nikkal. The latest special project is called "Collaborate with a Twist." Vicky collected the names of those members wanting to join and the pairings were made from a blind drawing. The partners communicated with each other to choose the format, subject, substrate, medium and size and then the partners exchanged materials. For the "twist", the partners chose a specific color to highlight. Photographs of the finished work were sent to Vicky, along with a short note pertaining to the experience, and soon this collaborative project will be available for viewing on the website. Here is an example of one of the collaborations. Jaleh Etemad was partnered with Kathleen Kuchar. They sent collage papers to each other. The color chosen was RED. On the left is Jaleh's collage using all of the papers that Kathleen sent her. On the right is Kathleen's acrylic collage using papers Jaleh sent. What makes these collages really connect are the emerging red circles. These works are both square, 12"x12".



SURVEY—*Jean Warren provides us the results of a September survey.*

In September a survey was sent out via email asking all of our members to help us develop future plans for SLMM. It is challenging to know what members want out of their organization that encompasses all of the United States. Only 34 members, less than 25% of the membership, responded to the survey.

The following are preliminary conclusions from this survey:

Our weekly Tuesday Zoom gatherings, where we can share our work and creative ideas, have been a rich addition to the group and are well attended. Zoom has also enabled us to paint together on Open Studio days, Saturdays and Mondays. Please find these times and Zoom links on the website calendar and take advantage of the opportunity to share and learn.

Jean writes We're disappointed in the low response rate for the survey since the information will be critical in steering SLMM in the direction that is most productive for our members. If you didn't return the survey, please take this opportunity to add your input to the planning process for SLMM. Send me an email (jean@jeanwarren.com) and I'll send you a survey form to complete and return.

Members overwhelmingly preferred an in-person conference (with speakers and workshops) vs a Zoom conference, as there's nothing that compares to the personal interaction between members. We are looking into venues for 2025 or 2026, Santa Fe has been suggested.

The Web Gallery offers a quarterly exhibit of our artwork and is highlighted on the front page banner of the website. We hope you will take advantage of the many shows throughout the year. Watch your email for the entry instructions.

We also share work on our Facebook Group page as well as on Instagram. If you need help getting onto either of these, please contact one of the Board members.

The Promotional Post Cards are being widely used to promote SLMM. If you want some cards to promote your exhibition or to place in an artsy place, contact Nicola Mason at nicola.mason@uc.edu with the number you need. The postage is compliments of SLMM. The recent Mid-West SLMM exhibition held at the Hutchinson Art Association, Hutchinson, KS, had a nice stack to hand out to the visitors.



Mid-West Art Exhibition

The Opening reception for the SLMM Mid-West Art Exhibit was held at the Hutchinson Art Center, Hutchinson, KS on October 20, 2023 from 5-7pm. The show ends Nov. 18.



Five of the SLMM artists were present at the opening: Kathleen Kuchar, Hays; Dolores Baker and Mary Kottmann, Great Bend; Barbara Jo Converse Stevens, Downs. Also attending and not pictured was Christina

Lamoureux, Hoisington. SLMM members from Nebraska, Oklahoma, Texas and Kansas participated in this exhibit. They were: Marlene Meitl, McCook, NE; Cal Mahin, Kari Schultz, Kathleen Kuchar, Ethan Jay, Hays, KS; Valerie Mills, Mary Kottmann, Dolores Baker, Krystall Barnes, Alyssa Bliven, Great Bend, KS; Beth DeMont, Manhattan, KS; Rebel Mahieu, Carla Johnson, Colby, KS; Von Pounds, Larned, KS; Christina Lamoureux, Hoisington, KS; Barbara Jo Converse Stevens, Downs, KS; Terri MacDonald, Tulsa, OK; Jean Griffin, McAlester, OK; Janet Ruffin, Houston, TX; Kathy Farr, Spring, TX; and Sue Burke Harrington, Lucas, TX.

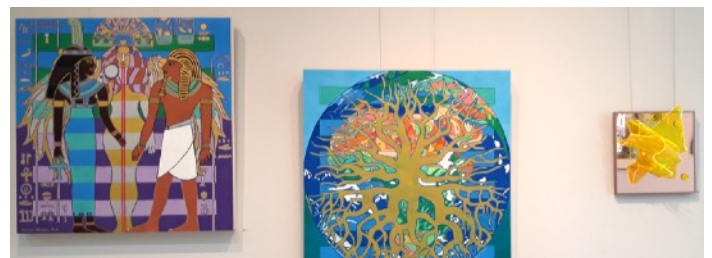


There was a good crowd at the opening including one of the gallery's patrons, a local artist and gallery owner who remarked, "It was my favorite show I've seen at the Hutchinson Art Association."

The artwork pictured below comes from Oklahoma, Nebraska and Texas members, Sue Burke Harrington, Jean Griffin, Terri MacDonald, Marlene Meitl, Janet Ruffin and Kathy Farr.



SLMM members from Albuquerque & Santa Fe are exhibiting artwork at the Oasis Institute, Albuquerque, NM. The exhibition, titled "Hopes and Dreams", will be displayed through December 19. Here is a sampling of the artwork on display.



Member News

Jaleh Etemad

"It has been quite an interesting year for me. After dealing with the loss of my husband and some health issues, I kept my promise to make art and never give up. I have remained dedicated to SLMM and all the wonderful artist members."

Jaleh traveled to Paris for a week and ten days on an art cruise on the River Seine to celebrate her birthday. She



writes "I had a wonderful trip flying on my birthday to Paris where I was both excited and energized. My days in Paris were incredible since I traveled with my son who is an architect. We visited many turn-of-the century and 1920's and 30's architectural sites and many remain so beautiful. We spent a lot of time in Le Corbusier, the father of Modernism. We visited 34 foundations of well-known artists like Picasso and Monet as well as Giacometti's studio. Seeing the studio really shook me up. He actually slept on the rickety bed in his

studio which was full of paints and instruments to cut up since he was also a sculptor."



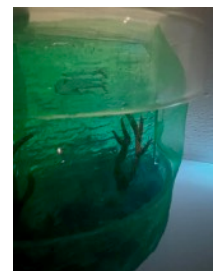
Jaleh had three shows this year. "Breaking Barriers" was held at the Sausalito Center for the Arts where she showed eight pieces of figurative work. The second show, "Celebration of Creativity", was held at the Belvedere Tiburon Library, Aug. 17-Oct. 22.

The last show, "Past and Present", pictured at the right, was held in the Tiburon Town Hall Community Gallery. She is now preparing to have a small showing in Saint Stephen's church lobby in Belvedere. The work will be from her "Candle Series" that is all about healing. Presently, Jaleh is busy and excited as she works with her publisher to create a book of visual stories about her artistic life. She is asking for your support and prayers.



Jaleh says, "Once again, I want to thank Susan Dreiling for doing such a magnificent job with our website. I am sure Mary Carroll Nelson with her red hat on her head is watching from above with a smiling face."

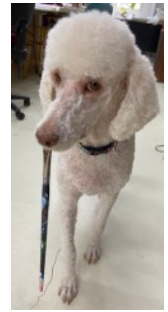
Rachel X Hobreigh recently showed work at the "Blue Hour Above and Below" art exhibition curated by Kim Abeles at the AltaSea in San Pedro, CA from Oct. 16-Oct. 28 with a closing reception on the 28th. The show featured installation, ceramics, video, glass, photography, sound, and paintings by over twenty artists. Rachel's work was in the category of an "Above and Below Culture Dish."





Kathleen Kuchar

This year has been especially busy with many shows and other activities. Some of you who Zoom have kept up with Kathleen's dog saga. She adopted a standard poodle, Ellie, a few months ago and Ellie has been busy training Kathleen to keep things picked up. By the way, according to Ellie, Kathleen is a slow learner. So far Ellie has mangled a tube of Hooker's green acrylic, ruined a remote control for the TV, chewed up her phone charging cable, destroyed a Dale Earnhardt, Jr. die-cast race car...of course, the most valuable one in her collection, and a booklet, a magazine, a ball point pen and other things too numerous to mention.



Despite all that, Kathleen says she will be keeping Ellie. Ellie says "Woof Woof" translated as "Thank You". Why does Kathleen take up so much space writing about Ellie, you ask? Because of Ellie, Kathleen has not been able to get as much art done as she would like. This is all about to change now that Kathleen has been fully trained. Ellie goes in the crate when Kathleen needs to paint or work on the computer.



Above right is the new labyrinth which Kathleen had installed this past summer. It has become a sacred place where walking the path has been contemplative and healing, not only for Kathleen, but for others who have come to experience the connecting of mind and spirit. It brings personal peace in this chaotic world.

On the left is our founder, Mary Carroll Nelson, walking a labyrinth at the 2009 Conference in Los Angeles. The labyrinth is an ancient symbol that relates to wholeness. SLMM in a nutshell!



Marlene Meitl

Marlene's photos are mainly taken in her own backyard. She writes that joining SLMM has made art more fun and interesting. She enjoys meeting everyone online and in person and likes the art talks and different ideas and techniques shared on Zoom. "I am just so glad to find people who do and talk art. I have not had people to do that with for a long time. Everyone is so friendly and open to do so. Thank you SLMM".

Marlene was in Hays to enter photographs in the "Five-State Photography Exhibition", so we met for lunch. Pictured on the right are Cal Mahin, Marlene Meitl, Karrie Steely, and Kathleen Kuchar.



Shirley Nachtrieb

Shirley taught a three-day workshop in Manhattan, KS in early October. The 14 students painted in acrylics and watercolors. Everyone was in charge of their own studies. The picture of Shirley holding the phone is when she called her twin sister, Sharon Eley, to let her say "Hi" to the students and for her to see what everyone was painting.





The photos were taken by Deb Umschied, Manhattan Artist/photographer, who also took the class. The Manhattan art class chairman was Emmalee Tredway. The Giraffe is watercolor on Masa paper. The golden abstract is acrylic on watercolor paper.



Shirley is teaching Fall classes in watercolor at the St. Peters Community and Arts Center in St. Charles, Missouri, running from Oct. 17-Dec. 12.

Richard Newman

This Fall Richard is showing a mixed media sculpture created for an annual "Teapot Show" at the Mainley Gallery in Belfast, Maine. Pictured is both the inside and outside of his sculpture called *Tea Time*.



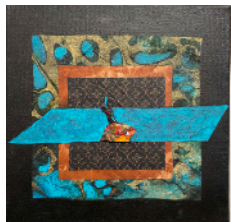
Nancy Ego Nikkal

This collage is part of Nancy's new series titled *Orange and Blue*, organized with cut papers that touch and overlap and are glued in a grid design on wood panels. She has been working on the following sizes: 12x12, 16x16 and 18x18 inches. Every collage in the series includes magazine papers with circles, dots and spirals and painted papers she creates with stencils and a Gelli plate. This collage is 16" square and also includes a top layer with cut circles that mimic the circles in the painted papers.

Nancy writes, *When I prepared the entry (a different image) for the SLMM Web Gallery "Music in Our Souls" theme, I Googled "music and circles" and the first item to come up linked to a Noel Harrison song titled "Windmills of Your Mind" that starts with "Round like a circle in a spiral, like a wheel within a wheel...never ending or beginning on an ever spinning reel". It was an amazing match for my circles and spirals, and I included the lyrics with my image for the Web Gallery. One repeated line in all three stanzas in the song made me think of Mary Carroll Nelson and her reference to our Blue Earth as a marble. "And the world is like an apple whirling silently in space...like the circles that you find in the windmills of your mind". To hear Noel Harrison sing, search on YouTube.*

Janet Ruffin

Janet self-published a poetry chapbook entitled "Swimming in Empty." *These poems are my artistic response to the lived daily moments I encountered working in a cancer hospital's environment as an art teacher. They are also a testament to the healing power of art for patients, families and health care workers.*



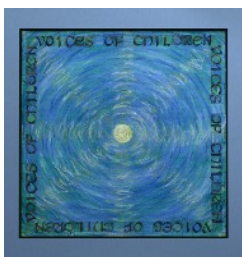
Janet showed two of her collages in the recent Mid-West SLMM Exhibition held at the Hutchinson Art Association in Hutchinson, KS from Oct. 20-Nov. 18. On the left is *In Between* and the other painting is *Turquoise*.



Teresa M. Staal-Cowley

Teresa recently wrote and illustrated a children's book published by Westbow Press called "Rainbow Children." *The image of "Rainbow Cookie" is based on a true story of a little*

girl that I face painted a year ago when she was lonely and depressed. The second time I painted her face she said she wanted me to paint a dark night sky with sparkling stars of hope when she used to be sad and lonely. Coming out of the dark sky is a rainbow across her forehead with a warm chocolate chip cookie at the end of the rainbow with a bite out of the cookie. She brought back a few friends to get their faces painted and tell their stories. The Rainbow portrait of the little girl's face I painted inspired me to write the book and share the stories children tell me when I paint their faces, hands and arms.

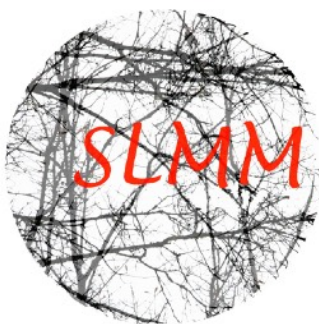


Teresa also taught a mixed media calligraphy class last summer and this fall to middle school students. She says that there is a new trend developing with children seeking self-expression in response to current events through mixed media and lettering/calligraphy. Children are struggling with controlling their depression, mental health, suicidal ideation, self-harming behaviors, bullying and violence with suicide on the increase which is becoming a crisis epidemic. The focus on teaching how to use art tools and knowledge of mixed mediums and the creation of Artist Trading Cards (ATCs) have been ways to give youth new tools to help themselves and reach out to their peers. Teresa says that as mixed media artists, we have an opportunity to go beyond creating beautiful art for others to view when we offer abstract, creative, or inspiring opportunities that reach our children and adults in our communities.



Welcome new SLMM members, 2023-2024

Lynda Chamberlain, Tobias (Toby) Flores, Deborah Goodenberger, Jamie Kelty, Elizabeth (Liz) Morton, Jay Mahieu, Ann Orts Knauth, Randy and Michele Schlitter and Naomi Warren.



Circle of Prayer

We offer a prayer for members who have passed and those going through difficult challenges. We also remember those affected by storms, fires and other natural disasters. A specific request is for our President, Barbara Jo Converse Stevens and her husband, Charlie, who are dealing with serious health issues. Keep these treasured members in your healing light.

Donations and Gifting

SLMM has once again been generously gifted with a grant of \$7000. from the Galen A. and Jaleh A. Etemad Family Fund of the Marin Community Foundation. Our heartfelt appreciation goes out to the Etemad Family for their continued support. We also received a \$1000. grant from the National Philanthropic Trust. The website now gives all viewers the ability to make donations to SLMM throughout the year. Go to www.slmm.org and at the bottom of the Home Page, click the Donate Button. It is a great opportunity to help SLMM and to make a tax-deductible contribution. The following members have generously taken this step to add some extra dollars when renewing memberships for the 2023-24 term: Mary Ann Beckwith, Tamera Bedford, Judie M. Bordic, Robin Brooks, Sue Burke Harrington, Carla M. Duncan, Kathy Farr, Ann Orts Knauth, Kathleen Kuchar (Kathleen has donated her time and energy to this newsletter), Mick & Christine Leo, Georgia Mason, Nicola Mason, Patricia McCandless, Nancy Egol Nikkal, Linda Penrod, Barbara Jo Converse Stevens, and Jean Warren.

Keeping History Alive

It was 2014, nine years ago, that Hays, Kansas, hosted the SLMM national conference. Here are a few photos: Nancy Nikkal with her collage and Ann Hartley with her shoe sculptures exhibited at the SLMM national art show at the Hays Art Center (The show's theme was "There's No Place Like Home" and shoes were to be a part of the work), Catherine Keebler in her colorful apron as she worked on a relief sculpture at the casting workshop at Fort Hays State University, Lynn Mikami showing enthusiasm at an exhibit in Lucas. The bus trip took us to Lucas, known as the Grassroots art capital of Kansas. Here we toured "The Garden of Eden". Google this place and you will be amazed what there is to see. The community also has the 2nd best restroom in the USA!



Start saving your \$\$ for the SLMM conference to be held in 2025. The board is working on the details and will keep us posted as to exact date and place. It has been way too long since we met in person. Until we do meet in person, keep up the connections by Zooming, Web Gallery, Book Club, SLMM Facebook page, Instagram, Special Projects, or even some snail mails. What fun it is to find a card or letter in the mailbox. If you haven't already printed off the roster, why not do it now. That way you can quickly look through the names and pick out a person or two to send notes/cards.

President

Barbara Jo Converse Stevens

Vice President

Sue Burke Harrington

Treasurer

Terri MacDonald

Board Members

Judie Bordic

Rebel K. Mahieu

Georgia Mason

Nicola Mason

Jean Warren

Staff

Executive Administrator: Karen Van Hooser

Newsletter Editor: Kathleen Kuchar

Website & Web Gallery Design & Administrator:
Susan Dreiling

National Committees

Membership Committee

Barbara Jo Converse Stevens, Chair

Georgia Mason

Website Committee

Sue Burke Harrington, Chair

Liz Ruest

Barbara Jo Converse Stevens

Communication & Social Media Committee

Co-Advisors: Sue Burke Harrington, Nicola Mason,
Lynn Mikami, Barbara Jo Converse Stevens, Jean
Warren

Special Projects Committee

Co-Chairs: Judie Bordic, Vicky Lennon, Nancy Nikkal

National Exhibition & Conference Committee

Chair: Rebel Mahieu

Sue Burke Harrington

Sage Schmutz

Professional Growth Committee

Chair: Jean Griffin

Kathleen Kuchar

Lynn Mikami

Nancy Ego Nikkal

\$500 Travel Grant Advisor for National Conferences

Lynn Mikami

EX-Officio

Mary Carroll Nelson, founder, 1982-1984

Alexander Nepote, past president, 1984-1986

Richard Newman, past president, 1986-2004

Nancy Dunaway, past president, 2004-2008

Nina Mihm, past president, 2008-2013

Jaleh Etemad, past president, 2013-2018

Laura Pope, past president, 2018-2023

Newsletter

Please submit any inclusions directly to Kathleen Kuchar, at kakuchar@hotmail.com. Newsletters are published two times a year, April and October at which time they will be emailed to all members. Hard copies can be mailed at \$10 but always free when found on the SLMM website. [Next due date is April 15, 2024.](#) **Membership Roster** is published once a year in September at which time it will be emailed to all members. Hard copies can be post mailed for an additional fee of \$10. The membership renewal notices will be sent via email in May with a deadline to renew of July 1st. The membership term runs from July 1st through June 30th of the following year. Any updates to your contact information should be sent directly to Karen Van Hooser, Executive Administrator at karensvh@gmail.com

Membership Renewals & Applications

SLMM is a 501(c)(3) non-profit organization incorporated in the state of New Mexico in May 1982. Annual dues are \$50.00 for Individuals, additional \$25.00 for spouse/mate. The membership term begins July 1st and ends June 30th of the following year. Membership applications and renewals are processed through the SLMM website slmm.org with the convenience of PayPal to pay your dues...or if you prefer to pay by check you may request an invoice to mail to: SLMM, PO Box 897, Guthrie, OK 73044.

Artist Link or Artists Page

Susan Dreiling susya.dreiling@gmail.com is the person you need to contact when submitting work for your Artist Link or Artists Page. She reminds us that it is free to have an Artist Link that gives your name and contact information and one photo of an artwork plus an optional short statement. If you want an Artists Page, it will allow more information on the website such as additional photos, a vitae and bio. This will cost a one- time fee of \$60. payable directly to Susan.

As your editor, I am always so excited to receive your news and to share it with our membership. I can't believe this is my 18th issue! Be sure to mention the website to your artist friends and to share your enthusiasm for this amazing organization. We include all forms of expression in SLMM, so if you know of a musician, a dancer, an actor, a writer... encourage them to join SLMM.