



the society of layerists in multi-media

"...the relationships in art are not necessarily ones of outward form, but are founded on inner sympathy of meaning."--Wassily Kandinsky

Table of Contents:

President's Letter
Conference, Exhibition
Member led Workshops, Retreats
Regional News

Member News
Circle of Prayer
Special Thanks
Officers

Message from the President

It is an honor for me to serve as President of the Society of Layerists in Multi-Media and I will do my best to continue the important work of the previous administrations. We have a strong Board of Directors that I look forward to working with to keep our organization active, interesting, informative, and inspiring. Most of all, it is important to keep our premise that all things are connected in the forefront. This is what ties us together on a philosophical level and why we consider SLMM to be our artistic home.

Our gratitude to Ex-Officio, Jaleh Etemad, for her strength, courage, and gracious service to SLMM as President during the past five-years. Together with Vice President, Lynn Mikami, and the Board of Directors, much was accomplished. We now have a beautiful tri-fold brochure to help promote our society, the new hardcover book 'Unique Insights', an updated website that we can be very proud of, and the creation of a members Facebook page to help us connect with one another. We hope that everyone will utilize these features for future networking.

We welcome three new board members, Gale Craig (Sedona, AZ), Kathy Farr (Shenandoah, TX), and Kendall Johnson (Upland, CA), who join current board members, Jenny Badger Sultan (San Francisco, CA) and Win Ratz (Cheyenne, WY). Their dedication to our organization and willingness to carry it into the future is greatly appreciated. Plans are to add two more members onto the board with the next term beginning July 1, 2019. All SLMM members in good standing are eligible to serve in this position and we ask that you will give it your consideration as well.

Also serving our organization is Terri MacDonald (Hays, KS), Treasurer. Terri has the expertise to work with our Executive Administrator to continue to keep our financial well being in order. We are pleased to have Kathy Farr take on the position of coordinator for the Deep South/South Central Region. She joins coordinators Jenny Badger Sultan, Pacific Coast/Canada Region, Nancy Egol Nikkal (White Plains, NY), Northeast/Midwest Region, and Win Ratz and myself, Southwest/West Region. Our Executive Administrator, Karen Van Hooser, makes sure that we are all informed and connected. Website Designer/Administrator, Susan Dreiling, keeps us up to date and

looking great online. Newsletter Editor, Kathleen Kuchar (Hays, KS), collects society information to share with our membership. Much work is required to keep our society running smoothly and we are thankful to have it in such capable hands!

Our annual national conference is a very important event for our society, as it is the only opportunity where all of our members can gather en masse to reconnect with old friends and make new associations. **The 2019 conference is in the works for October 3-6 in St. Louis, MO.** In addition to conference activities, the area offers many other attractions like the Cahokia Mounds, Gateway Arch, lots of galleries/museums, and Mississippi River paddle boat tours. Watch for information about this meeting and please put these dates on your calendar. We hope you will be able to attend and find it to be a memorable experience.

The Society of Layerists in Multi-Media is an art organization unique from any other, all inclusive in diversity of media and style. As like minded creatives, we take our work deeper than the physical and into an intuitive, spiritual, and emotional connection that we present to the observer. We ask our members to act as ambassadors in support of the membership outreach for our group. Personal contact is a good way to find new SLMM members. If you meet another artist you think might be a good fit for our group, please invite them to a meeting or give them our website info. The tri-fold brochures are available from our national office to display at individual and member exhibitions. Also, the *'Unique Insights'* book is offered to SLMM members for \$30 (regular retail \$50) and makes a great gift or marketing tool for an exhibit proposal. You can order them on our website or through our national office. We are always looking for potential venues to hold membership shows, so if you see a space that may be appropriate, please contact your regional coordinator so we can follow up with a proposal.



As officers and board members, we want and need your input. SLMM is an organization for all of us and we want it to reflect that. Please feel free to contact any one of us with your suggestions and comments. Your support and participation is paramount to the success of our society.

Sincerely,
Laura Pope, SLMM President

2018 National Conference

Tacoma, Washington
August 23-26, 2018

The annual national SLMM conference is an important event as it provides us with the opportunity to connect with our fellow SLMM members, to renew old friendships and made new ones. This year's conference did not disappoint. Held at the Hotel Murano, downtown and within walking distance to wonderful art and architecture, the venue houses its own collection of glass works which are exhibited on each floor and in the lobby. On the right are Sharon Higgins, Mary Carroll Nelson, Leslie Ebert, and Laura Pope.



REPORT ON THE 2018 CONFERENCE IN TACOMA

by Mary Carroll Nelson

Our National Conference for 2018 was based in Tacoma's Hotel Murano whose name suggests that it houses a fine collection of art glass beginning in the lobby and on each floor to the top. Esthetically and personally, the hotel served as a gracious background for the busy 3-day gathering. Weather cooperated.

Thursday, August 23 Our opening reception was mainly for fellowship. In attendance were Andrea Mastrangelo, owner /director of Museum Contempo, with her colleague and fellow glass artist, Ty Haut, from Shelton, WA where our exhibition was hanging and ready for us.

Friday, August 24 We rode by bus to Seattle and visited three not-to-be-forgotten locations: the Chihuly Garden of Glass was worth the trip; it is beautiful. The Seattle Art Museum had far more in it than I was able to see. On our way out of town we stopped at the Elliott Bay Book Company, famous place whose interior is an intimate, raftered and wood dominant setting for a selection of books, many with recommendations from the staff hanging below them. [Despite a late afternoon, Friday traffic jam we made it back in time for the formal evening seated dinner and program.](#) Jaleh Etemad spoke to the attendees with encouraging and dedicated words as her last presidential duty and we gave her a framed calligraphed award certificate designed by Albuquerque artist Judy Elder. New president, Laura Pope, spoke affirmatively about her new role and received a gavel with a brass SLMM logo on it. After dinner, Leslie Ebert gave an uplifting presentation about her discoveries in searching for the energy of light via digital processes. To make it more vivid, she passed around actual images we could study.



Saturday, August 25 In the morning we had a general meeting and the discussion was enthusiastic about ideas for how to move forward in SLMM. Laura Pope presided. Free time came next. The Art District surrounding Hotel Murano is served by a free train, on and off again, that circuits places to visit. One stop takes you to the Bridge of Glass which showcases large urns and sculptural glass by Chihuly. At the end of the bridge is the Museum of Glass where some of us watched glass blowing. We had to be ready at 5 for the bus ride to Museum Contempo for the opening of our exhibit, *Layering Within and Without*.



Just inside the entry was a delicious spread of cheeses, crackers, wine, fruit drinks, and cakes. In the center of the gallery was a square carpet surrounded by 50 chairs. The well planned program began with inspired poetry by Jeff Meyers which he read. Marigem Emde, sang a cappella, in a strong voice, great gusto and cheer, beginning with "Crazy." Marilyn Stablein read from her book *Sleeping in Caves*. Diana Wong also gave a talk.



Teresa Staal-Cowley danced for us surrounded by filled balloons that she kicked as she swirled to music while telling the story of the salmon.



I spoke for a few minutes about SLMM's holistic nature and Dick Newman read a quote from his own essay in our book, *Making Connections*. I then presented an engraved Nambe bowl to Andrea for her gifts of heart and effort on behalf of SLMM.

There were 77 works in the show by 49 artists that filled the walls. Art glass from members of the gallery including Andrea herself were placed on pedestals to pick up the colors of the works above them.

When the magic moment came to get back on the bus, it was a time of many hugs and thanks to the group of local SLMMers who had so generously welcomed us.

Sunday, August 26 We had a breakfast buffet and a good discussion about the possible [2019 conference location of St. Louis, MO](#). Other topics were mentioned on note pad pages to give to Laura who had had to leave very early. We had our traditional prayer circle closing and then went our separate ways with more ties of friendship than before we arrived.

As organizer of this meeting, I can only judge it by the fact that I had a very good time, saw a great deal of beauty and felt bonded once more to this wonderful group of gifted people.

Mary Carroll Nelson

ADDITIONAL PHOTOS FROM THE CONFERENCE (more pictures in back of newsletter)



Workshops and Retreats

Jan Sitts Workshops

Check out Jan's many workshops by visiting her website www.jansitts.com
Her November 5-7th class is FULL! So if you are interested in one of her 2019 workshops it would be wise to register early.

February 18-21, 2019, Visual Art Center, Punta Gorda, FL

May 6-9, 2019, Sedona Arts Center, Sedona, AZ



Barbara Jo Stevens Workshops

To learn more about upcoming workshops & retreats, contact Barbara Stevens, Downs, KS at stevensbjc@gmail.com

These retreats/workshops are held in a fully equipped house with most art supplies provided as well as all meals and excursions. This is more than a class, it is an experience you will never forget. It is an opportunity for you to explore, play, and SEE in new ways. This is NOT your typical workshop. It is truly an EXPERIENCE for beginners and professionals and all those in between

Barbara Jo Converse Stevens held a one-day DOWN AND DIRTY workshop experience on **September 8th** at her Spirit Studio in Downs, KS. Although this workshop featured the poured paint technique, it also featured a fast-paced morning of activities which centered around jump starting one's creativeness, refreshing one's perspective, and getting in touch with one's inner spirit and passion. Terri MacDonald, SLMM member from Hays, KS attended the workshop and had this to say, "Oh my, it was so inspiring and guiding. Thank you for everything and also what's to come!!"



Regional News

The Pacific Coast/Canada Region

We're getting ready for a regional exhibit, "Without Limits," March 3-31, 2019 at the ARTCORE Brewery Annex in Los Angeles. Submissions are due Nov. 1. We will also be having a workshop with David Parsons (the juror for the "Without Limits" show) at his studio, combined with a visit to the LA County Museum of Art to view the show "Outliers and American Vanguard Art" January 25-26. February 3 we will have a gathering at Jenny Badger Sultan's home in San Francisco featuring SLMM member Marilyn Stablein and her new book in conjunction with the Codex Book Fair

(<http://www.codexfoundation.org/codex-2019/2019-schedule-of-events>).

Southwest/West Region

On **May 3, 2018**, 18 SLMM members attended the regional gathering at Mary Carroll Nelson's home in Albuquerque. Each person brought two quotes to share. This evoked much discussion and visiting which is pictured here.

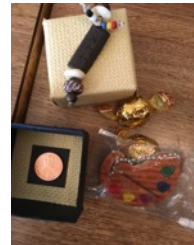


Deep South/South Central Region



Nine Hays area SLMMers met for lunch on **June 19, 2018**, at Professors, a local restaurant, for a meet and greet. Those attending were Kathleen Kuchar, Cal Mahin, Kari Schultz, Betty Baker, Terri MacDonald, Jo Stevens and Beth DeMont. Dereama Allenbaugh was unable to attend. We welcomed two guests. Angela Muller, an artist who lives in Russell, Kansas, who has exhibited her work regionally and nationally. Von Pounds, Larned,

KS, also joined us as a guest. His work is two-dimensional and mainly watercolor. *They both were impressed with our premise and have decided to join SLMM.* We welcome them as new members! Cal Mahin gifted each of us with a small box that he recently created. Inside was a 2018 penny plus other treasures.



On **July 17th**, the Hays area SLMM members met for a fun afternoon of sharing art and getting to know the new members Von Pounds, Larned, and Barbara Stevens, Downs. Cal Mahin hosted the get-together in his wonderful studio filled with art and treasures and inspiration! After lunch, each member showed a piece of their work and shared techniques, styles, questions, answers, along with LOTS of oohing and aaahing! Pictured is Kathleen Kuchar sharing her techniques and symbols in her painting, and Cal Mahin and new member Von Pounds discussing the use of unusual materials! It was a wonderful and inspiring afternoon.



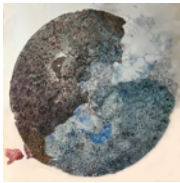
On **October 11th**, the Hays area SLMM

group met at Professors, a local restaurant, to welcome new member, **Peggy Edwards Wambold** from Newton, KS. The group keeps growing! We are excited to have the opportunity to share similar goals and interests. Our future goal is to have an exhibition at the Deines Cultural Arts Center in Russell, Kansas, April, 2020. A more immediate goal is to have a one-day workshop in March at Kathleen Kuchar's studio in Hays, KS. Those attending the meeting, left to right: Beth DeMont, Von Pounds, Barbara Jo Stevens, Peggy Wambold (new member) and her husband, Bob, Betty Baker, Kathleen Kuchar, and Terri MacDonald. Kari Schultz, Cal Mahin and Dereama Allenbaugh were unable to attend.



Member News

Renee Amitai



Renee showed work in the "Water, Earth and Air" Exhibition at the Muckenthaler Cultural Center Fullerton CA, April- May 2018. The title for this piece is "La Ronde Elle Tourne."

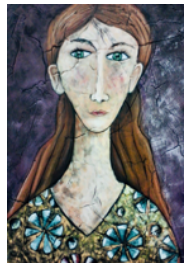
Judie Bordic

Two of Judie Bordic's Chinese style watercolors, *The Travelers* (on left) and *Good Morning, Sunshine*, have been accepted into the "55th Annual Exhibition of the Sumi-e Society of America, Inc." This year's event was curated by Dr. Yifei Gan and hosted by the Sarasota Chapter of the SSA. It is open to the public at the ArtCenter Manatee in Bradenton, Florida, from Nov. 2-30, 2018.



Claudia Chapline

Claudia's art continues to be shown throughout the U.S.A., Europe, Latin America and Asia. She has published ten books of poetry and art and is continuing to create mixed media and mixed genre visual/literary art. Claudia showed ten pieces with six other Marin artists in the Bartolini Gallery show at the Marin Civic Center, San Rafael, CA last April. On April 28th, 2018, the Claudia Chapline Gallery celebrated International Sculpture Day with works by a number of internationally known sculptors including Dale Chihuly.



Beth Ann DeMont

Beth says she hadn't entered a competitive show since 1989. Recently she decided to enter the "Third Annual Juried Art Show" at the Quincy Gallery in St. Francis, KS (Oct. 6-27) and won a cash award on her cold wax oil painting, *A Quiet Place* depicting a small creek in Ashland, KS. She won a cash award on her plaster and acrylic painting, *No One Notices*, a portrayal of one of her past students.



Beth has illustrated a book called "Gus Gets A New Home," written by Cindy Gant. This book is in a series called "The Adventures of Gus...A Therapy Dog and So Much More." The book is available from Torrance publishing at Barnes and Noble Booksellers, Amazon and I-Tunes store beginning Nov. 2018. *This is my first illustration assignment and I have a lot to learn, but I did enjoy the process.* The second book, "Gus Goes to School" is in progress at this time. This book is to help children understand new and different challenges that Gus faces as a therapy dog for the students, such as Gus had to go to school and graduate to help them. There are questions written for the teachers to ask their students as the book is being read. *Cindy and I taught together and I knew Gus well. He passed away with a form of aggressive cancer. Cindy wanted him to continue to help children and to honor Gus, so she wrote this series.* On the left is the book cover for "Gus Gets A New Home."



Beth Ann DeMont is also involved in a community barn quilt project at Ashland, KS. It is a MUST SEE as it is Kansas' Largest Barn Quilt, measuring a whopping 16' x 16' and is located on the north outside wall of Venture Foods, 803 Main St. The center of the quilt is comprised of four sunflower themed quilts, measuring 4' x 4'. Surrounding the center are 48 quilts, 2' x 2' of various themes. Many depict local organizations and interests. All of the quilts were donated by women and men from the Ashland and surrounding area. Beth Ann drew most of the patterns for the people to paint. (She did paint four herself). On Oct. 27, a second 16' x 16' Patriotic quilt will be installed, making the total project 32' x 32'. This one has four large patriotic quilts in the center, surrounded by more classic and original quilts. It will

truly be a magnificent and colorful piece of art. Just to clarify, this quilt is made out of weather-resistant materials made to withstand the elements. The project was made with 1/2" MDO board (a paintable surface made of plywood with a weather-resistant resin overlay) and exterior house paint.

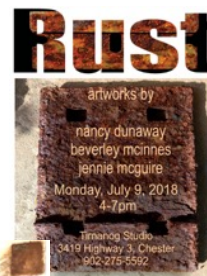
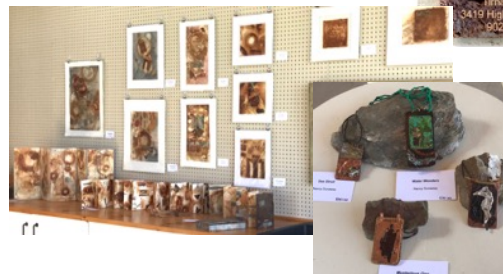


Elaine Drew

says she started writing "Courting Trouble" years ago when she lived in England. While it masquerades as a Romantic Comedy, Elaine thinks you'll find layers of Dark Age Anglo-Saxon history and myth supporting its entertaining facade. It's a coming of age story about a young woman who infiltrates the royal court to save her inheritance. She gets everything she prays for, sort of. The book is available on Amazon.

Nancy Dunaway and Beverley McInnes

created a Rust Show in July along with another rust artist friend, Jennie McGuire, in Chester, Nova Scotia. Jennie's beautiful barn studio was the site for the one night event where the three artists showed rust prints, rust sculptures large and small, rust artist books and rust jewelry! Each woman works with rust in her own way, but it all blended beautifully and the guests were intrigued with learning about our obsession! Over 100 guests attended the show and reception on a perfectly beautiful day. On the left are works on the wall by Beverley and Nancy has work on table. In the next photo. Nancy has many works on the wall and counter. On the far right are works by Beverley.



Jaleh Etemad

In Jaleh's own words, "2018 has been a kind and good year for me; it was a year of important awards. The Town of Tiburon and Tiburon Heritage and Arts awarded me for my services as Town Artist Laureate. The celebration was held in Town Council Chamber. It felt great to have served my community for over 4 years.



At the SLMM Tacoma Washington Conference, I received a beautiful award of appreciation for serving this wonderful organization for 5 years, given to me from Mary Carroll Nelson. Thank you all SLMMers for making me so happy and rewarded". The photo shows Jaleh on left receiving the award from SLMM founder, Mary Carroll Nelson. The new president, Laura Pope looks on.

Jaleh has been invited to show two major works beginning Nov. 11, 2018, at prestigious Skirball Cultural Center in Los Angeles. They will be honoring some Iranian Women Artists in their annual Gala. She has started working on her art and getting ready for a solo show in Belvedere Tiburon Library, Foundation Room, January 2019.

Jane Frank

The following pieces were accepted in shows this summer: *Elemental*, watermedia, Central Virginia Watercolor Guild, McGuffey Art Center, Charlottesville, Virginia; *A Murder of Crows*, watermedia, Virginia Watercolor Society, Olin Hall Gallery, Roanoke College, Salem, Virginia



N. Catherine Fraser

Catherine had a solo show for the month of August at the gallery "Imagine That". She attended the national SLMM conference visiting Seattle, Tacoma, and Shelton, WA where she enjoyed seeing images at Museum Contempo, Sidney Fine Art Show and Articipation at Christ Church Cathedral.

On the left is *Chasing Clouds and a Golden Light*, oil on photograph, 24" x 36". *I Wonder* is the same media and size.

Sylvia Harnick

exhibited six paintings from her series, "Clusters/Coalesce" at the Omni Gallery in Huntington, NY. The show ends on Jan. 6, 2019. All paintings are 40"x 38".



Ann Hartley

received an award from the "National Collage Society Small Format Exhibit" at The Butler Institute of American Art in Youngstown Ohio. "Those really small ones, 4x6 inches, are fun to do!" (*Editor's Note: SLMM thanks you for the many years of serving as coordinator of the Deep South/South Central Region. You were amazing!*)



Nadia Hlibka

"I never submit and haven't exhibited in a while. So it's extra amazing (at least to me) that I received an Award of Excellence for my collage, *Bird Children* at the first annual "Share our Walls" exhibit of the Southern Arizona Watercolor Guild in Tucson, Arizona. The show ended Sept. 30, 2018."

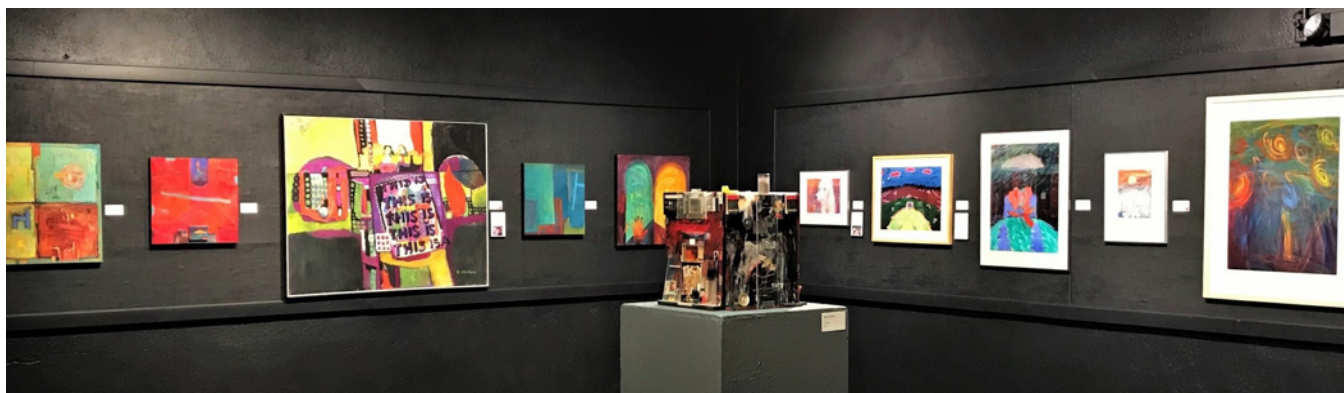
On left is Nadia with juror Kyle Johnston.

Catherine Keebler

Catherine is participating in an exhibit: "Asemic Writing: For Your Interpretation" at the Oesterle Library Gallery in Naperville, Illinois from Dec. 9, 2018 - Jan. 27, 2019.

Kathleen Kuchar

Kathleen missed the SLMM conference this year due to a conflict. She was having a big retrospective exhibition at the very same time. The show was held at the Hays Arts Center, Hays, KS with the opening on August 24th and ending on October 9th. The exhibition was called "Kathleen Kuchar: A Journey" and consisted of over 75 works spanning her career of nearly 60 years. Kathleen also created a Shutterfly book with her story combined with images from the show. "It was quite a job putting together a book of over 70 pages including photographs of all the work in the show plus additional photographs showing my childhood and other significant moments in my life and career". The opening reception brought in over 1100 people! It was a once-in-a-lifetime event for Kathleen to see her career before her eyes. The *Hays Daily News* put her photo on the front page and wrote a very favorable article. On September 7th, Kathleen had an informal conversation at the gallery for those wanting to learn more about her art and life. Coinciding with the show at the Hays Arts Center, Kathleen exhibited work at Salon Ten-O-Seven, Hays, KS in a show called "Celebrating Kathleen." Kathleen's dog, Owen, got a sneak peak and seemed to approve of his portrait.



Kathleen Tucker Landreth

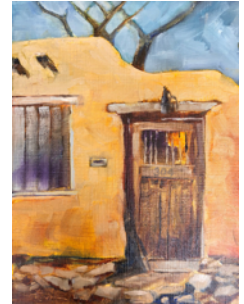
is currently exhibiting paintings in the following juried shows:

New Mexico Art League "Lay of the Land New Mexico," Sept. 4 - Oct. 6, 2018. (*Mesa Storm*)

Rio Grande Art Association "Encantada!" Oct. 1 - 29, 2018. (*Taos Book Store*)

New Mexico Watercolor Society "Fall National Show" Oct. 1 - 28, 2018. (*Tea for Three*, plus one more)

St. Mark's Sacred Art Gallery "Small Works" Aug. 31 - Nov. 30, 2018. (#304, plus three more)



Terri MacDonald



SLMM members Terri MacDonald, on left, and Kari Schultz (not pictured), participated in the Hays Fall Art Walk with their collaborative work, *Slices of Life*. The ladies share studio space at the "Artists at Work," gallery / studio located on Main St. in Hays, KS. Each artist created a panel that reflects their life's story. Terri's work is on the right. Kari's panel is adjoining Terri's.

Terri participated in a workshop directed by fellow SLMM member, Barbara Jo Stevens, in Downs, KS on Sept. 8th. Photos can be seen on the Workshop Page in this newsletter.



Cal Mahin

Cal was a workshop co-presenter at the annual Kansas Art Educators Association Conference held at Rock Springs 4-H Camp by Junction City, Kansas from October 11-13. The conference had over 110 in attendance. There were 15 awesome art educators in Cal's workshop where they did lots of "layering."

Cal's work, on the far left, is called *Small Focal Point*.

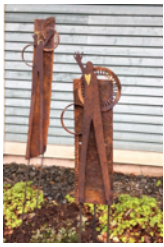
The ones on the right are examples of workshop participants. All work is 14" x 11". They used acrylic paint, plaster, paper, drawing and so much more! Cal says, these artists could all be LAYERISTS!



Patsie McCandless

created the cover for her new novel, *Becoming Jesse*, using her PaperSolo art techniques. "I am pleased to say the novel has been published and is now available on Amazon. Hope you take a look and read some of the amazing reviews it has received. Light On!" She writes, "Writing *Becoming Jesse* has been my journey of imagination and inspiration: turning-up my own inner-Light with magic, joy and wonder. It is timeless story-telling with endearing characters, come to life, like old friends you just can't wait to visit; with glistening life lessons told with equal parts of humor and tenderness; all stirred together with fun, funny, dreamy curiosities, adventures and hijinks. Now you can begin living here and now. Light on!"





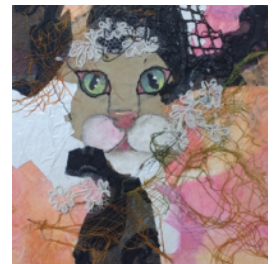
Beverley McInnes

Welcoming Sentinels (two of my five) were installed at White Point for the amazing Sea'spired Outdoor Exhibition that was in place until Oct. 8, 2018. There were 30 installations throughout the beautiful property. After this show closed, Beverley's pieces were put in place at the Chester Art Centre, Nova Scotia.

Shirley Eley Nachtrieb

Shirley won an award at the St. Peters Cultural Arts Center in an exhibit "Fantasy in the Woods", July & August, 2018. She also was juried into Fractions Art Gallery Exhibit, "The Science of It," June and July. At the same gallery she had work exhibited in the show called "Focus on the Details," St. Charles, MO, July and August. From Sept. 7-Oct. 29, Shirley had her painting *Echoes* juried into the "27th International Society of Experimental Artists Exhibit" at the OCCA/VAC-Runyan Gallery, Newport, OR. Although she was unable to attend the SLMM conference in Shelton, WA, she was able to have two "Moonscape" pieces juried into the SLMM exhibit, "Layering Within and Without" at Museum Contempo (both sold). Besides exhibiting her work, she taught summer classes at the St. Peter's Cultural Arts Center in July and August and judged an art exhibit at the St. Peters Cultural Arts Centre, St. Charles, MO, Aug. 2018. Shirley will be teaching "Painting on Fabric" workshop at the St. Peter's Cultural Arts Center from Oct. 26-27. Nov. 3, 2018, she is participating in the "Collector's Choice XVIII" at St. Louis Artists' Guild, St. Louis, MO. In Sept. she won two awards in the "Value of Values Exhibit", Oak Leaf Artists' Guild, St. Peters Cultural Arts Centre, St. Peters, MO. Besides all these activities, Shirley had time to travel to Chillicothe, Ohio to help her sister, Sharon Eley, with her first one-woman show, opening in the Fall of 2018.

Pictured on the right are two of her works, *Heart and Soul #3* and *Remnants #1*.



Richard Newman

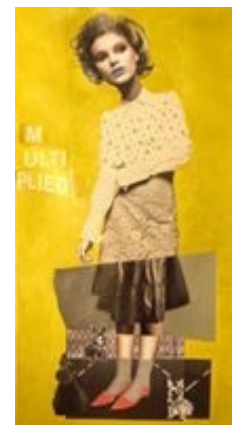
Richard showed work in "Americas-All Media 2018" at Northwest Art Center, Minot, ND from Aug. 21-Oct. 6, and in a show "Green", Webster Arts, St. Louis, MO, Sept. 13-Oct. 31, 2018.

Title of this painting is *Playing Field*.

Nancy Egol Nikkal

Nancy had a solo exhibition at the Upstream Gallery with an opening reception, April 29th. The show ended on May 20, 2018.

In June, Nancy exhibited two works in the faculty/student show at the Pelham Art Center where she teaches collage. They used one image for the exhibition postcard. The collage was exhibited in Hays, KS at the SLMM meeting in 2014. She is *Dorothy* and the theme was "There's No Place Like Home."



Von Pounds

Editor's Note: Von Pounds is a new member of SLMM, from Larned, KS and is already making waves as a go-getter.

Von has had a busy two months. He participated in the "50th Annual Russell Original Art Review" (R.O.A.R.) and received both a 2nd Place and an Honorable Mention in the Professional Class Watercolor division. This is a statewide competition that had 312 entries, 118 artists from 29 cities.

Last month he entered some work in the 2018 Kansas State Fair - Professional Class Art Show. "Hopes were high as I was fortunate to place in the previous year's show as a first time exhibiting artist in a juried show. Alas it was not meant to be but unknowingly, I was provided an opportunity to experience an art lesson that will forever change my artistic journey."

In Von's own words : I saw where they were holding a plein air competition on the fairgrounds the next day and even though I have always been a studio artist and had no plein air equipment, I decided to enter. After all, I was there and it was an opportunity to paint. The big day was overcast and rainy, not the best conditions for working in watercolor but I pushed on and was able to produce two works under less than favorable conditions. I'm happy to report that my efforts unexpectedly resulted in a 3rd place and "People's Choice" awards.

Rewarding, but "horn tooting" is not why I now write this. Stepping outside my comfort zone forced me to dig deep and learn some new things. Such as making design decisions on the fly, understanding how conditions affect my materials and how to work under the watchful eye of people full of curiosity, questions and comments. Needless to say it was quite an experience, especially during the second painting for which I had selected the kid's petting zoo as my subject. Interacting with the kids that gathered at my easel was fun and exciting. "What color is next?" or "If I stand down there can you paint me in your picture?" were just a few of the interesting questions. Unexpectedly, their excitement and curiosity about what I was doing revived the same emotions in me and reminded me why I create art. Their inadvertent boost in my creative energy was exciting.

Upon reflection I realized that there are many ways to share art with the world that may actually give back more to the artist than simply sales or recognition from putting it in shows. Without stepping outside my comfort zone I would have missed possibly the most valuable art lesson I've ever experienced. Both our art and our creative process are meant to be shared, with other artists and with everyone. That's why as artists, we do what we do.

So my recommendation to anyone that creates is step out of that comfort zone and explore what you can learn about yourself. Maybe on that rainy, overcast day at the Kansas State Fair I was privileged to unknowingly inspire a future artist or even meet a destined master. That opportunity to share or "pay it forward" was the best reward I could have ever received. Thanks to those kids, my inner "creative fire" now burns bigger and brighter and I better understand my own creative process...the WHY.



On the left are some Hays, KS area SLMM members giving Kathleen Kuchar's dog some extra love. Left to right are new members Barbara Jo Stevens, Peggy Wambold, **Von Pounds**, Bob (Peggy's husband), Betty Baker (member since 2004) and Beth Ann DeMont (new member). *(Editor's note: My dog, Owen, loved the attention. I loved the help of the SLMM members in moving my retrospective paintings down into the studio. They made quite a few trips up and down the stairs. I owe them big time!)* The paintings below are the plein air artworks Von created at the Kansas State Fair.



Janet Ruffin

Janet had some of her art made into scarves. For more information: shopvida.com/collection/create2710



Mervyn Seldon

Mervyn's activity this past summer was her June show at 57 Underground in Pomona, CA with an Overflow Show at Claremont Manor in Claremont under the joint title of "The First Twenty Years: Mervyn Seldon's Favorite Paintings, 1998-2018." The Pomona show consisted of 35 paintings, and the Overflow Show had another 15 or 20. Her joy in the presence of color and design in our lives has been a central theme in her work. In her first years as a painter, the fruits and vegetables she and her late husband planted, grew, and preserved were a major theme, but this interest grew into the portrayal of interiors, suggesting the personalities of their occupants. Domestic studies then expanded into striking landscapes, both real and imaginary, and some striking portraits. As violence and civil wars deepened the chaos of today's world, she began to use geometric abstraction to express her dismay and our fears. Her concerns about world wide destruction will remain a theme in her work, along with her joy in color, texture, and design in the natural world and in our lives.

Teresa Staal-Cowley



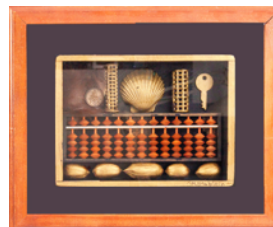
Teresa Staal-Cowley and Andrea Mastrangelo participated in a successful silent auction to raise funds for art instruction and art supplies for residents in Low Income Housing in Olympia, WA. Additional funding comes through the Veterans Administration, Low Income Housing Institute and the Washington State Arts Commission. The event was Saturday, Oct. 13th at the Billy Frank Jr. Place housing. Teresa is the art instructor and Andrea assisted with generous donations and professional advice.

Teresa has recently been assigned to work with participants and the Olympia Community Court to provide art and calligraphy instruction as an additional means to earn community service hours. The image shown is called *Spirit of the Artists*.

Marilyn Stablein

Will appear at the Portland Book Festival book fair Nov. 10 with her new book of stories *Vermin: A Traveler's Bestiary* which can be ordered at marilystablein.com. She will exhibit artist books and assemblages in "Books & Boxes," a group show in Portland, OR at Roll-Up Gallery opening Nov. 9. An excerpt from a memoir (*Houseboat on the Ganges & A Room in Kathmandu*) to be published in March 2019 appeared in the *Kyoto Journal*. The article is illustrated with paintings and calligraphy she created during her six year residency in the Himalayas when she was in her twenties. Other art and writing appear in new anthologies and in online journals.

Garden Frenzy, altered book
Abacus Charm, assemblage



Barbara Jo Converse Stevens

Barbara Jo Converse Stevens, Downs, KS and Angela Muller, Russell, Kansas, will be featured at the Hays Arts Center in a duo show entitled, "Of the Earth" Oct. 19th-Nov. 28th. Angela will be showing her large earth paintings using various minerals, dirt, rocks, and rain water while Barbara will be exhibiting her primitive hand built ceramic vessels displayed on found wood. Both artists are new 2018 SLMM members.



Barbara will have work at the Shafer Gallery in Great Bend, KS as part of the "Friends and Acquaintances" show kicking off the October 26th opening with a Masquerade Ball. The show runs through Dec. 8th. Nov. 4th is the grand "Holiday Show" at the Sandzen Gallery in Lindsborg, KS, where eleven of Barbara's primitive ceramic vessels will be displayed along

with 49 other artists through Jan. 6th, 2019.

The Great Bend artists' group, Artists At Large, will also feature fourteen of Barbara's ceramic sculptures at the Deines Center in Russell, KS Nov. 9th through Dec. 28th.

Peggy Wambold



Peggy is our pick for this issue's NEW MEMBER SPOTLIGHT

As your newsletter editor, I have picked Peggy. She has been an artist and educator all her life and in the past few years has found the need for some support and encouragement. She now is feeling the connectivity that SLMM offers. Recently she attended her first get-acquainted gathering in Hays, KS. Peggy appreciates the warm reception and looks forward to meeting and connecting with other SLMM members.

Peggy's current work focuses on the beauty of nature. She fills her palette with blues and greens and living things. She knew that she loved to draw and in first grade won her first contest in the Hutchinson, KS newspaper by drawing cowboys, Indians and horses. The cowboys were lassoing the Indians with their ropes on top of the tall cliffs. She took her first art classes in Greensburg, KS when she was a junior. Peggy graduated from Fort Hays State University, Hays, KS with a BA in art in 1971 and started teaching high school art in McCook, NE. She also taught art in New Jersey while her husband Bob was in the Army. They moved back to Kansas in 1981 when she started teaching art in Kansas again. Peggy retired from teaching high school art at Clifton/Clyde high school in 2010. She then moved to Newton, KS and started painting full time and became an active member at the Carriage Factory Art Gallery where she gives painting workshops for adults and children. In 2016, she traveled to France with a group of artists and studied painting. They stayed at the Le View Convent in central France for almost three weeks. The trip to France has changed her painting with more color, texture and feelings.

On Sept. 21, 2018, Peggy had her opening reception for her Solo Painting Exhibition at the Deines Cultural Center in Russell, KS. The 60 paintings were on display through Oct. 27th. Many of Peggy's artist friends surprised her by coming to the opening. One special guest was her college professor, Kathleen Kuchar. "It was wonderful to reconnect with dear sweet people that became friends. Kathleen Kuchar and Barbara Jo Stevens asked me to join SLMM that evening."



Pictured are two of the paintings from the solo show. Kathleen Kuchar and Peggy make a toast to an amazing solo show and to new beginnings as Peggy joins SLMM.



Peggy Wambold was one of the painting volunteers that helped paint a mural in downtown Newton, KS. She helped paint the sky and clouds for two days. High school art students designed and painted their own sunflower. It was started on October 1st and a completion date was set for Oct. 17, 2018.

Kerri Warner

New SLMM member Kerri Warner, Sacramento, CA, is a mixed media collage artist who has has several shows now and more in the future. Art Design Consultants—Art Comes Alive Award: Gallery Contract with Gallery V, Kansas City; Art in the Pearl/ Portland, OR, San Diego Festival of the Arts/ San Diego, CA, and Palo Alto Festival of the Arts/ Palo Alto, CA. She has a Public Art Contract with Salt Lake City Airport: *Whimsy Wall/Dogs That Travel?* to be installed in March 2020. Kerri sold these pieces this past summer.



Sandra Duran Wilson

Sandra's newest book shipped out in mid-October. "It has been 20 years in my dreams and this is my sixth book. It brings everything full circle. I will be having a book signing, demo and give-away at the Santa Fe Artisans on Dec. 1st." Sandra is also writing a blog that folks may wish to follow. It incorporates ideas of spirituality and creativity. It is all on the website www.AwakeningYourCreativeSoul.com The link for ordering the book is <https://amzn.to/REDSsEV> and a photo of me with my advance copy. Sandra's website is www.SandraDuranWilson.com

Welcome 24 New Members—January-October, 2018

Pauline Chernichaw - Englewood Cliffs, NJ, Northeast/Midwest
 Pam Demo - Boise, ID, Pacific Coast/Canada
 Beth Ann DeMont, Hays, KS, Deep South/South Central
 Alice Durrie - Tahuya, WA, Pacific Coast/Canada
 Elise Espat - Albuquerque, NM, Southwest/West
 Paul Kensinger - San Francisco, CA, Pacific Coast/Canada
 Sandra Kirk - Frisco, TX, Deep South/South Central
 Mary Martin - St. Louis, MO, Deep South/South Central
 Vickie Myers - El Segundo, CA, Pacific Coast/Canada
 Angela Muller - Russell, KS, Deep South/South Central
 Ty Nault - Shelton, WA, Pacific Coast/Canada
 Katherine Meyer, Gary Barten - Santa Fe, NM, Southwest/West
 Sarah Nelson - Albuquerque, NM, Southwest/West
 Von Pounds - Larned, KS, Deep South/South Central Region
 Jean Shultz - Redondo Beach, CA, Pacific Coast/Canada
 Lowri Sprung - San Pedro, CA, Pacific Coast/Canada Region
 Teresa M. Staal-Cowley - Olympia, WA, Pacific Coast/Canada
 Barbara Jo Converse Stevens - Downs, KS, Deep South/South Central
 Audrey Suer, Rancho Palos Verdes, CA, Pacific Coast/Canada
 Jeff Troy - Temple, TX, Deep South/South Central
 Laraine Wade - Olympia, WA, Pacific Coast/Canada Region
 Peggy M. Wambold- Newton, KS, Deep South/South Central
 Kerri Warner - Sacramento, CA, Pacific Coast/Canada
 Patricia A. Wheelhouse, Rochester, NY, Northeast/Midwest

Circle of Prayer

Let us offer a prayer for members who have passed and those going through difficult challenges.

Jackie Schaefer passed away Tuesday, October 16, 2018. Nancy Dunaway wrote the following to honor her close friend. *Jackie was a dear friend and wonderful artist and I will cherish many sweet memories of her. She is the person who*



told me about SLMM when we were both grad students in Savannah. She finished the program ahead of me after years of raising her family and taking classes just a few at a time over the years to reach her goal. Her husband, Chuck, had gone to the new school (Savannah College of Art & Design) and traded his work for Jackie's tuition. He was always supportive and after she graduated they went on the road to high end art fairs where she sold her beautiful work for many years. They moved from Savannah to North Carolina to be near her grandchildren and children after their last child was out of the nest. Jackie was a sweet and calming presence and a kind loving friend. She influenced me in my art and I always admired her. She came to me one day and said she thought I should know about SLMM and that it would be a perfect fit for me. I immediately sent in images and joined and that was



the beginning of my own journey. She loved it and was the embodiment of the premise. She served as Treasurer for many many years and was on the advisory board for years afterwards. She loved the organization and the people in it. As years passed she and I would talk every year or so and catch up. I always enjoyed those conversations and her sweet kind loving spirit. She will be missed by those of us who were lucky enough to know her. Rest well sweet Jackie. The photos of Jackie were taken in 2006 at the Houston SLMM conference. The small photo is of Jackie, Catherine Keebler and Nancy Dunaway. It was a joyous time with many good friends celebrating art and friendship. That is what SLMM is all about.

Prayers are offered for those SLMM members affected by the wildfires in the western states and the hurricanes and floods on the east coast. Deep South/South Central region members **Georgia Mason** and **Judi Sage Schmutz** were among those affected.

Diane Courant, member from the NE region, has been ill for sometime. When renewing her membership, Diane wrote...*"I just need to do this as a thank you to Mary and the organization for some lovely experiences along the way."*

Special Thanks to Jaleh and Galen Etemad



It is with great appreciation that we accept the generous contribution to the Society of Layerists in Multi-Media from Jaleh and Galen Etemad, who have given our organization \$5,000 towards the provision of unrestricted support through the Marin County Foundation (MCF). The dedication and patronage of the Etemad's toward SLMM in establishing the 'Galen A. and Jaleh A. Etemad Family Fund' is indicative of the essence of our members.

Special Thanks to Mary Carroll Nelson



Thanks to the efforts of SLMM Founder, Mary Carroll Nelson, members enjoyed a rewarding experience at the National Conference in Tacoma, WA, August 23-26, 2018. Working diligently with Executive Administrator, Karen Van Hooser, Mary Carroll planned and coordinated this important event in conjunction with the national member exhibit, 'Layering: Within and Without', hosted by SLMM member, Andrea Mastrangelo at her gallery, Museum Contempo, in Shelton, WA. In addition, Mary contributed incidental expenses for the conference in appreciation for all the gifts given over the years by SLMM.

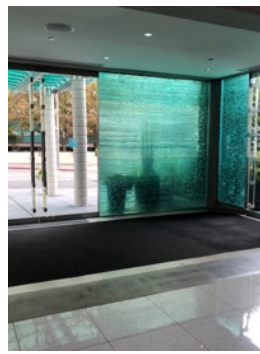
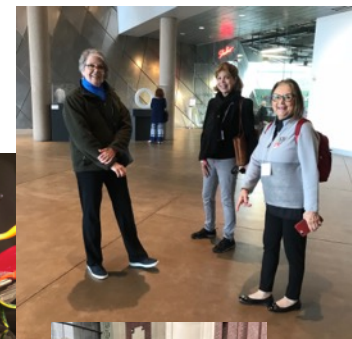
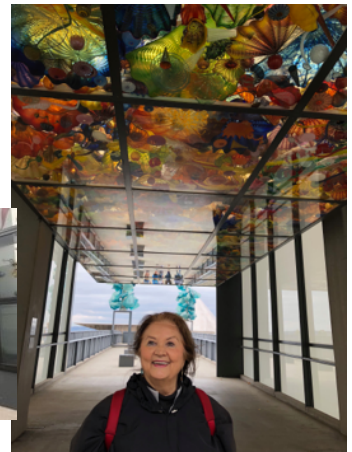
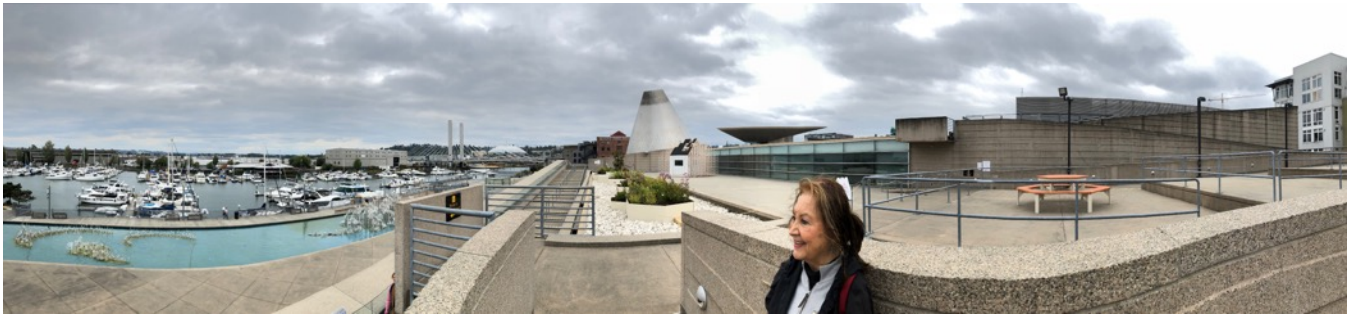


On behalf of SLMM, a very special 'thank you' goes out to Mary Carroll Nelson.

We also thank Andrea for hosting our show at her gallery. Pictured are Andrea and Mary Carroll at the exhibition reception.

More photos of the conference, THANKS to Jaleh Etemad and her daughter, Nakissa.





Officers

President

Laura Pope

Treasurer

Terri MacDonald

Board of Directors

Gale Craig

Kathy Farr

Kendall Johnson

Win Ratz

Jenny Badger Sultan

ex Officio

Mary Carroll Nelson, founder

Alexander Nepote, past president

Richard Newman, past president

Nancy Dunaway, past president

Nina Mihm, past president

Jaleh Etemad, past president

Staff

Executive Administrator: Karen Van Hooser

Newsletter Editor: Kathleen Kuchar

Website Design & Administrator: Susan Dreiling

Regional coordinators

Deep South/South Central

Kathy Farr

Northeast/Midwest

Nancy Egol Nikkal

Pacific Coast/Canada

Jenny Badger Sultan

Southwest/West/International

Laura Pope & Win Ratz

SLMM Mentors

Win Ratz, Committee Chair

Marilyn Christenson

Kathleen Kuchar

Nina Mihm

Lynn Mikami

Nancy Egol Nikkal

Mary Wilbanks

Suzan Kraus, digital imaging

Newsletter Editor. Please submit any inclusions directly to Kathleen Kuchar, Newsletter Editor, at kakuchar@hotmail.com. Newsletters are published two times a year, April and October. **The deadline for the Spring Newsletter is April 15th.**

Membership Roster is published once a year in September at which time it will be emailed to all members. Hard copies can be post mailed for an additional fee of \$5.00. The membership renewal notices will be sent via email in May with a deadline to renew of July 1st. The membership term runs from July 1st through June 30th of the following year. Any updates to your contact informations should be sent directly to Karen Van Hooser, Executive Administrator, at karensvh@gmail.com

Membership Application

SLMM is a 501(c)(3) non-profit organization incorporated in the state of New Mexico in May 1982. Annual Membership Dues are \$40.00 for Individuals, additional \$15.00 for spouse/mate. The membership term begins July 1st and ends June 30th of the following year. The completed registration form and dues should be mailed to SLMM, PO Box 897, Guthrie, OK 73044

Editor's note:

I would like to thank our Executive Administrator, Karen Van Hooser, who is efficient and caring. As your newsletter editor, I have contacted Karen numerous times to provide clarification and information. She takes care of so many details and without her, I am not sure we could function! *On behalf of SLMM, thank you!*

The 2018 SLMM conference was a big success. There are so many who helped in so many ways to make the conference a warm and inviting one. **Now we look forward to the next one, tentatively planned for Oct. 3-6, 2019 in St. Louis, MO. Details will follow.**

Reminders and information

Artist Link or Artists Page. Susan Dreiling is the person you need to contact when submitting work for your Artist Link or Artists Page. She reminds us that it is free to have an Artist Link that gives your name and contact information and one photo of an artwork plus an optional short statement. If you want an Artists Page, it will allow more information on the website such as additional photos, a resume, etc. This will cost a one-time fee of \$60. payable directly to Susan. To get the ball rolling, here is Susan's email: susya.dreiling@gmail.com

Facebook. SLMM has now launched a Facebook page that members can connect with other members.

Website. Be sure to check the website for information regarding membership, news, books, etc. It is our way of keeping in touch.



We thought you might like to see how much Penelope has grown. Susan Dreiling, our Website Administrator, tells us that this picture was taken recently at a Minnesota apple orchard just before the snow hit. Penelope is 21 months old and is keeping Susan and Johnny smiling.

A few pictures to add fun and flavor

*My first time to attend a SLMM conference was in 1998 at Bradford College, Haverhill, Massachusetts. It was exciting to meet the founder, Mary Carroll Nelson, (pictured on the left standing by Juliet Wood's large labyrinth painting) and to be included in the new SLMM book that was unveiled at the meeting, "Bridging Time and Space." I met so many of the members, including Diane Courant seen standing by her fantastic fiber piece, as well as Ilena Grayson and Juliet Wood at the Art Exhibition. I instantly knew that I made the right decision in joining this amazing group of artists. **Kathleen Kuchar, newsletter editor.***

